

January Program: "Slide" into the New Year with the TWSA

Start the new year out right by joining us for a favorite Minnesota Watercolor Society tradition—our annual review of slides from the most recent exhibition of the Transparent Watercolor Society of America (formerly Midwest Watercolor Society), accompanied by commentary from our own Dick Green, a TWSA Master Watercolorist. It takes acceptance into ten TWSA shows to reach that level, and fewer than 30 painters have achieved this designation. Dick's so quiet in person that you might not realize what a big voice his paintings have in the world of watercolor. What a great way to get fired up to take your painting to the next level in 2006!

—cont. on p. 3

Theme for the
February MnWS Mini-Show
(formerly Show-and-Tell):

Blue

Blue shadows on snow, stormy blue skies, mournful blue thoughts, and blue-faced portraits . . .

PLUS . . .

Bring up to 3 slides of your own work to share at the January meeting.

We'll view member slides after the slides of the TWSA Exhibition. This is a your chance to see how your slides really look when projected on the "big screen". It's getting harder and harder to find slide projectors, so don't miss this chance to check the quality of your slides.

Be sure to indicate which is the front of each slide and which way is up!

IMPORTANT NOTICE!

Due to changes in our Spring Show dates, some of our activities this spring are **not on the usual days of the week or month.**

PLEASE MARK YOUR CALENDARS CAREFULLY AND HELP REMIND EACH OTHER!

(Somehow not everyone sees these newsletter announcements—if you have a friend who stockpiles the newsletters to read "later", please pass the word about these schedule changes!)

April Meeting: Thursday, Apr 6
(first Thursday in April, instead of second, to avoid Easter Week)

Spring Show Reception: Friday, May 5
(No Thursday night was available)

Learn with One of the Best by Bonnie Crouch

As chairperson of the MnWS workshop committee, I have tried to select artist/instructors who will provide new and exciting ways to use watermedia. We are especially fortunate that nationally recognized artist/author Mary Alice Braukman has agreed to host a four-day workshop October 10–13, 2006. Mary Alice's abstract paintings are characterized her use of rich, vibrant colors and their energetic compositional structure. Mary Alice Braukman will stimulate her students to experiment with new materials and tap into the sources of their inspirations. Her paintings can be viewed at www.braukmanart.com.

Abstract painting can be a liberating experience for the growing artist. It can inject an element of spontaneity and bravado into your work which will improve your paintings



▼ Fall 2006 Workshop instructor Mary Alice Braukman.

regardless of your preferred subject content or style. Come learn with one of the best, Mary Alice Braukma

—cont. on p. 3

MESSAGE *from the President*



Style (definition): A particular, distinctive, or characteristic mode of action or execution of work of art.

December's general meeting featured our second annual holiday pot luck and members' critique session. We had a great turnout and plenty of food! There were about 30 members who brought at least one painting for discussion, and it made for quite a display. Karen Knutson did a fabulous job pumping up our egos as well as offering advice for improvement. Although we got a little rushed for time, with only about 2-3 minutes allowed per painting, it was a lot of fun to match paintings with faces for a change.

Of course, several of the paintings were easy to 'place to the face' even before they were up on the easel. Harry Heim's playful, expressive people make his art 'his'. The same goes for Judy Lieber's and Nancy Carney's paintings. Dan Wiemer has been experimenting and perfecting a creative approach that give his paintings a wood cut appearance. John Fleming's nudes are wonderfully confident pieces, the result of years of weekly practice at a figure study co-op. It's fun to be able to recognize an artists' work, and there are certainly benefits to having ones' own look. This month's discussion at my critique group's meeting centered around marketing, and the point was made that a gallery will give you more consideration if your art-work has a theme or definitive style.

And so, as artists, we strive for a uniqueness that will create our own niche in the buying public's eyes. However, this raises an age old dilemma: Do we paint to sell or paint for enjoyment? In an ideal world, they'd be one and the same, and once an artist reaches a point of expertise I imagine whatever they paint will be in demand. In the search for a distinctive style, an artist has to be careful that their artwork doesn't become secondary to the process. In this month's *Watercolor Magic* Barbara Nechis explains her criteria when jurying shows, and among the reasons for a painting not being selected are evidence of gimmickry and clichés. It's certainly a fine line, and there are no easy answers.

Interestingly, your own style may be recognizable to others long before you see it yourself. Just as we don't notice our kids growing up in front of our eyes because we see them everyday, we don't see the slow progression of our artwork as we plug away at home week after week. Yet one day, there's your style, dating and asking for the car keys. I feel that, as a landscape painter, I'm not doing anything new. How could I possibly, when there are a few hundred years' worth of paintings out there already? And yet people are able to pick my paintings out somehow. Ed Shimek's landscapes are like no others I've seen, because style goes beyond subject and method. When putting brush to paper, we are depicting something in a certain way, but more than anything we are recording our emotional response to that something. Expressive brushwork needs to come from within, and it will be a lovely and descriptive fingerprint, unique to us alone. If it's not pure in intention, and you're simply using a random brushstroke, it will probably just look contrived.

Style will evolve as you incorporate the lessons from workshops and books with hundreds of hours of practice. During December's critique meeting, a couple of the paintings brought up were done by members who have taken classes from me, and viewers could see some similarities. That's great, because number one, they must be listening and learning in class! And secondly, they probably enjoy my style of painting enough to emulate it, which is certainly flattering. Every artist learns this way, we all have our influences. The Art Institute offers classes now and then where you attempt to copy masterpieces in the museum, and I've always wanted to take one. That's one of the best exercises you can do. When I got back from Alvaro Castagnet's workshop, I tried to paint everything the way he would. Of course I couldn't, but it was exciting and kept me painting. I believe that's the quickest road to success, more than any amount of marketing a certain style. Have fun, paint for yourself more than anything, and the rest will fall into place.



BOARD OF DIRECTORS

President	Andrew Evansen 651-480-1742
Vice President	Emmy White 612-825-8312
Secretary	Paul Higdon 952-943-8020
Treasurer	Dianne Jandt 952-891-2375
Exhibition, Fall	CeCeile Hartleib 651-647-6078 Terry Kayser
Exhibition, Spring	Deb Chapin 952-890-8684
Hospitality	Ruth Hoglund 612-866-9741 Kathleen Sovell 612-374-3195
Librarian	Ruth Valgema 952-920-3975
Membership	Marian Alstad 612-824-6460
Member-at-large	Anne Graves 763-550-9686
Newsletter	Lynne Baur 715-688-2680
Program	Sandra Muzzy 952-854-7677
Publicity	Kris Melby 651-731-0629
Workshop	Bonnie Crouch 952-945-0682 Dianne Jandt 952-891-2375 John O'Leary 952-888-0638
Northstar Liason	Jeanne Long 612-920-3469

PAST PRESIDENTS

2002-2004	Sandra Muzzy 952-854-7677
2000-2002	Keith Donaldson
1998-2000	David Rickert
1996-1998	Jan Fabian Wallake
1994-1996	MarySue Krueger
1992-1994	Carol Gray
1990-1992	Gwen Leopaldt
1988-1990	Harry Heim
1986-1988	Sally Burns
1983-1986	Jeanne Emrich

BRUSHSTROKES

Editor	Lynne Baur 715-688-2680
Advertising Mgr.	Mary Hanson 952-476-6896
Mailings	Joanne Bauch 763-546-2169 Beverly Peterson 763-533-7757

HOW TO REACH US:

INFORMATION•VOICE MAIL LINE

952-996-9228

WEB SITE: www.minnesotawatercolors.com

BrushStrokes Newsletter

BrushStrokes is published monthly, September through June. Deadlines are the 15th of the month. Send letters to the editor and art related stories that help inform or educate members to:

MnWS BrushStrokes Editor

1830 Dutch Heritage Ct.

Baldwin, WI 54002-5155

lbaur@mac.com

(please do not use lbaur@att.net--account no longer active)

Advertising Placement

For ad rates or to place advertising, contact

Mary Hanson 952-476-6896

Braukman Workshop

—cont. fr. p. 1

Mary Alice is a nationally known artist who is the Director of the Kanuga Watercolor Workshops in Henderson, North Carolina. She has been chosen to exhibit her work in numerous national and regional juried exhibits, receiving many awards in the process. Mary Alice teaches workshops in experimental watermedia and collage through out the United States. She lectures and has served as juror for state and regional water media exhibitions as well. Her



▲ "Song of Songs" and "Draw a Line" ▲
by Mary Alice Braukman.

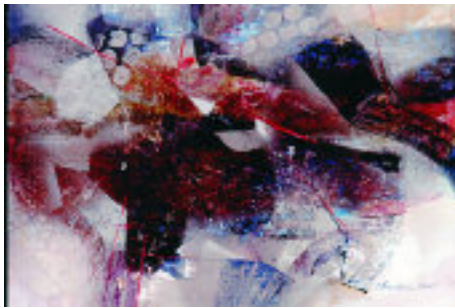
work has been featured in *Understanding Transparent Watercolor, Collage Techniques* by Gerald F. Brommer; *The Artistic Touch I & II* by Chris Unwin; *Creative Watercolor: A Step-by-Step Guide & Showcase*, and *The Best of Acrylic* (Rockport Publications). She was also asked to be the Guest Editor for *Watercolor* magazine's Special Issue on Experimental Approaches to Watermedia (Winter 2001).

Help Wanted! Workshop Team

Want a great excuse to call some of the best watercolorists in the country? Want to pick the workshops you really want to take? Our workshop team's term of service is ending.. Volunteers needed to chair the committee and to help with publicity, registration and other tasks..

Contact Andy Evansen (651.480.1742 , aevansen@cvtel.net) for more information on how you can help.

Due to her emphasis on a "hands on" approach the workshop will be limited to twenty participants. Most of your papers, paints and mediums will be supplied free of charge. The fee for the four-day workshop is \$345.00 for MnWS members and \$375.00 for non-members. To register contact Dianne Jandt at 952-891-2375 or artistjandt@aol.com. We will be showing slides of Mary Alice's work at the



February meeting. Application forms for this workshop will also be available at the MnWS meetings each month.

Think Big!: Cornerstone Commons, a senior housing facility in Plymouth, is seeking a volunteer artists or team of artists to paint a colorful mural in their activity room. They'll supply the paint. For more info, call Anne Graves at 763.550.0717.

Spring Show Update

by Deb Chapin

Juggling for calender time with air conditioning contractors was challenging, but the Spring Show, "H₂O Exploits" is on the calender! It's not too soon to be thinking about getting slides ready in plenty of time for the March 17 deadline! The prospectus will be in the February issue, but you can mark your calenders now.

The Show will be at the Colonial Church of Edina from April 24 to May 20. Drop-off of accepted work will be Saturday, April 22 with pick-up on Saturday, May 20. Don't forget the Awards ceremony on FRIDAY, May 5th! Brush off that new-fallen snow and create for spring! ■

To All My Friends at MnWS . . .

from MarySue Kreuger

Twice in less than a month, I have been totally surprised by the Minnesota Watercolor Society. First came the MnWS Service Award, a wonderful Winsor Newton Series 7 Kolinsky Sable, engraved with my name and MNWS, which was given to me at the November 2005 meeting. That was followed by an incredibly gracious article in the December issue of *BrushStrokes*. Both left me speechless and humbled.

During all the years I have been a member of MnWS, I have gained much more than I have given. I have been privileged to work with many dedicated, energetic Board members and Committee chairs. I've been delighted to see our membership grow and thrive on an active calendar of programs and exhibitions. I'm proud to be one of you, and especially proud to have followed in the footsteps (or should I say brushstrokes?) of Marian Alstad and Harry and Lois Heim as a recipient of the MNWS Service Award.

As I have noted in the past, artists are blessed with an ageless energy and curiosity. They are constantly forging a path through the unknown of new media, materials and techniques, and then helping others find their own way to a new vision. Thanks to all of you, my generous and talented friends. May 2006 be filled with your best painting ever! ■

January Program

—cont. fr. p. 1

TWSA is one of the few remaining watercolor societies that accepts only transparent watercolor in its exhibitions. On their website, TWSA states, "Modern technology has produced many new 'water-based media' products, referring to any medium that is resolvable in water. There are innumerable watercolor societies that now provide opportunities to exhibit these new products while TWSA remains dedicated to its original purpose. TWSA recognizes an important distinction between 'transparent watercolor' and 'water-based mediums.' With only a few other existing societies, TWSA moves forward with its passion, to preserve and promote the unique character of transparent watercolor as a major medium, for now and for the future."

TWSA has grown way beyond it's beginnings as a regional society in the Midwest; these days it

has international stature. TWSA juried exhibitions are highly competitive and it is no easy matter to be accepted.

For the exhibition we will view at our January meeting, only 80 paintings were selected from 896 entries, including one (pictured here to whet your appetite) by Dick Green.

The slides of these exhibitions are always an inspirational representation of the finest examples of transparent watercolor. Maybe seeing these slides will inspire you to try your luck with a future TWSA Exhibition (the deadline for the 2006 show has passed, but there's always next year), or perhaps you'll get all revved up to send your slides in for our own upcoming Spring Juried Exhibition. ■

[Be sure to see the Member Happenings section for news of two members' (Dick Green and Robin Berry) paintings being accepted into the upcoming 2006 TWSA exhibition. This is Robin's third acceptance and qualifies her for TWSA Signature Status! Congratulations, Robin!—ed.]

MEMBER *happenings*

Send member news to: *BrushStrokes*, 1830 Dutch Heritage Ct., Baldwin, WI 54002-5155, or email to lbaur@mac.com. Images are welcome and will be used as space permits.

Dick Green has a painting accepted into the 30th anniversary Transparent Watercolor Society of America exhibition. The exhibition will be at the Elmhurst Art Museum in Elmhurst Illinois June 17-Aug 21. Dick also has a painting accepted in the "Workers of the World" exhibition at the A Shener Velt Gallery in Los Angeles, CA.

Judy Lieber won a merit award for her oil painting, "Beach Party," at the Minnesota Artists' Association fall show. This painting was also accepted into the '05 State Fair.

Robin Berry's painting "Razzle Dazzle" was juried into the Transparent Watercolor Society of America (TWSA) 2006 show. This qualifies her for signature membership in the TWSA.

Karen Harris Rognsvoog, along with Heidi Poey, are the featured artists for the months of December and January at the Chanhassen Public Library, Kerber Blvd. in Chanhassen MN. Karen has 30 paintings on display there. Most are watercolors but she also has some Sumi-e paintings (Japanese ink paintings) and some multi-media

works. Heidi paints with acrylics and oil and is a well known artist in the twin cities area and beyond. Karen also was selected to show a watercolor in the juried show at the Robbin Galleries' "Extremely Minnesota" and has 2 paintings, "Bamboo Grove" and "3 Pears" at the



▲"Razzle Dazzle", by Robin Berry

Hopkins Center for the Arts for the next month in the Community Education exhibit there.

Congratulations Everyone!

Welcome!!

NEW MEMBERS

We have 376 paid members to date.

Nancy Harding
Liesa Miller
Carolyn Streed

Artists of Minnesota Travelling Show

Gallery G and The Nancy Carney Studio will host the Artists of Minnesota Travelling Mini Show for the month of February. The exhibit, all by Artists of Minnesota members, requires all art works be no larger than 7x9" outside dimensions. The exhibit travels to a different location throughout the state during the year. All art pieces are for sale. Opening night is Thursday, February 2, 2006 from 5 to 9 pm at Gallery G in the Northrup King Building, 1500 Jackson St. NE #256, Minneapolis, MN 55413. See www.northrupkingbuilding.com for directions, or call the studio at 612-961-7075 for more information. The exhibit runs through the end of February. ■

High quality giclée prints *without* the high price tag.

Give us a call, you'll be pleasantly surprised by our low prices and stunned by our service and quality. We are committed to providing artists with the highest quality products at reasonable prices.



612.721.2434 • www.dpiartservices.com



Minnetonka Center for the Arts

Student Show

Many Media - Many Talents

January 12 - February 10, 2006

Opening Reception January 12, 6 - 8 PM (FREE)

Winter Classes Start January 3

For Adults, Teens and Kids

Art After School Classes Start January 9

For Kids in Grades 1 - 7



Sculpture class at the Art Center

CALL FOR A FREE PROGRAM GUIDE!

2240 North Shore Drive
Wayzata, MN 55391

952.473.7361, ext. 16
www.minnetonkaarts.org

Studio classes in painting, sculpture, ceramics, photography, fiber, glass, jewelry, drawing; Gallery Exhibits, Gift Shop; Café

the WORKshopper

Send **Workshop** listings to: *Workshopper*, 1830 Dutch Heritage Ct., Baldwin, WI 54002-5155, or email to lbaur@mac.com.

Jan Fabian Wallake

►2006–Nov. 11-14. Brevard Watercolor Society, Cape Canaveral, FL. Contact: Linda Neal, 321-751-5520.

Jan has a once-a-month, three-hour class in Roseville. If you are interested in joining this fun and friendly group, call Jan at 651-351-1301 (no long term commitment—come when you can, pay only for the class you attend).

Lana Grow

►Jan. 16-20, 2006. Collage and Experimental Watermedia Workshop. Monday - Friday.

Limited enrollment—8 students

Dick Blick Store–Roseville, Studio Room
Contact Lana L. Grow at lgrow@msn.com or 651-633-5085.

►April 3-7, 2006. Aqua Media & Collage/ Experimental and Energizing. Limited enrollment—10 students. Contact: Edina Art Center, 612-915-6600.

►Fall 2006 (dates TBA). Aqua Media & Collage/Experimental and Energizing. White Bear Center for the Arts. Contact: Sue Ruthford, 651-407-5096.

Karlyn Holman


►May 2-17, 2006. Paint and Tour Ireland with Karlyn Holman. Fully escorted tour, open to painters and non-painters alike. For brochure call 715.373.2922 or go to www.karlynholman.com

Judy Lieber

►Painting on Monday Afternoon—any medium. 1 - 4 p.m., 8 wks.; starts Feb. 6.

►Tuesday Morning Portrait—any medium, different model each class. 9-noon, 8 wks.; starts Feb. 7.

Contact: Judy Lieber; 952.884.1815 or the Edina Art Center; 612-915-6600.



MnWS Workshops

Weekend Workshops
January 7-8, 2006—Andy Evansen
March 2006—Fred Dingler

Fall 2006 Workshop
Oct 10–13, 2006
Mary Alice Braukman

For MnWS workshop information contact
Bonnie Crouch, coordinator (952-945-0682)
Dianne Jandt, registration (952-891-2375)
or John O'Leary, publicity (952-888-0638)

Nancy Patrick Carney

►Pen and Ink Techniques: Textures, shading, converting a photo to a line drawing, more. Experiment with pens, inks, papers, minimal supplies—request a supply list. Sat., Jan. 14, 10am–3pm.

►Perspective Made Easy: Representing in two dimensions what the eye and brain perceive in a three-dimensional world. Bring drawing materials and a 9x12 or larger pad of paper. Sat, Feb 11, 10am–3pm.

Both workshops held at Minnetonka Center For The Arts. Each is \$40 members, \$44 non-members. 952-473-7361 to register.

Northstar News

January 19. Joyce Gow demo

February 16. Painting makeovers with Marian Alstad and Frank Zeller.

For meeting info contact Judy Fawcett (651) 731-2972

Meeting location is Centennial United Methodist Church, 1524 W. County Rd. C2 at Snelling in Roseville.

www.northstarwatercolorssociety.com

Handmade with pure honey & gum arabic.



M. Graham Artists Watercolors
Always on Sale!

ArtMaterials

2728 Lyndale S. 1-800-363-7709
www.ArtMaterialsOnline.com

Karen Knutson

►May 15-17, 2006 (Mon-Wed); 9 a.m.–4 p.m. “Starting with Abstract—Moving to Traditional” \$200 Duluth Art Institute members (\$240 non-members). A \$50 non-refundable deposit is required upon registration.

Contact: Duluth Art Institute, (218) 733-7560

John Salminen

►October 9-13, 2006 (Mon-Fri), 9 a.m.–4 p.m. \$375 Duluth Art Institute members (\$425 non-members). A \$100 non-refundable deposit is required upon registration. Contact: Duluth Art Institute, (218) 733-7560.



YOUR
WORKSHOP
HEADQUARTERS!

BLOOMINGTON ART CENTER
1800 W Old Shakopee Rd
Bloomington, MN 55431
www.bloomingtonartcenter.com
952-563-8587



Frank Francese
June 12-16, 2006



Tony Hedrick
September 25-29, 2006

MNWScalendar

Programs are held the second Thursday of the month at 7:00 pm.

January

Dec 12: Slides from the Transparent Watercolor Society of America, with commentary by Dick Green (TWSA Master Watercolorist)

February

Feb 9: James Boyd Brent (UMinn prof) will make a presentation on English landscape artists.

March

Mar 9: Program TBD

April

Apr 6 (Note: **First Thursday** of the month): Jeanne Larson demo

LOCATION: Christ Presbyterian Church, 6901 Normandale Blvd., Edina, MN (Corner of 70th St. S. and Hwy 100)

www.minnesotawatercolors.com

MEMBERSHIP APPLICATION

MnWS Membership Dues:

- Single: \$28
- Couple/Family: \$35
- Seniors (65+) \$23

Name _____

Address _____

City _____

State _____ Zip _____

Telephone _____

Email _____

Check here to have your name removed from the list sent to our exhibition award donors who mail product information to our members.

Mail your application and check payable to Minnesota Watercolor Society to:

Marian Alstad, Membership Chair
4011 Chicago Ave. S.
Minneapolis, MN 55407-3142

Wholesale Framing Supplies

Contemporary hardwood frames, Nielsen metal frames, matboards, custom cut mats, foamboards, glass & plexiglass, framing tools & supplies. Online ordering & framing advice.

www.metroframe.com

Call for a free color catalog.
952-941-6649 / 800-626-3139

METROPOLITAN PICTURE FRAMING



Wet Paint
inc.
Artists' Materials & Framing

1684 Grand Avenue Saint Paul
651.698.6431 open 7 days a week
info@wetpaintart.com www.wetpaintart.com

*Over 1300 watercolor brushes,
Over 1200 watercolors & mediums,
& plenty of paper in sheets, pads & blocks*



4011 Chicago Avenue South, Minneapolis, MN 55407-3142

*"To further development
of the watercolor artist
by providing a
supportive environment
with education and exhibi-
tion opportunities, and to
promote
public appreciation and
greater visibility of the art."*

— MnWS Mission Statement