

## Ever thought about being a juror?

In a departure from the usual painting demo at our monthly meetings, our fall opener, Sept. 9, will feature a role playing exercise. You'll be asked (playing the role of juror) to evaluate eighty paintings and select sixty for a show and reject the remainder.

Further, you'll be required to determine ten awardees: Best of Show, the Evansen Cup, the E. White Warm & Fuzzy and the Hearing Prize, the 1st, 2nd and 3rd Honors, and three Honorable Mention (no ranking).

The source of the paintings displayed for this exercise will be scanned from the American Watercolor Society's recent catalogs. The paintings will be coded and displayed on 8.5 x 11 paper and also displayed in a slide presentation format.

This role playing exercise was field tested at the February meeting of the Minnesota Artists Association and the enthusiastic participants thought it was really "cool."

As you know, it is a currently popular belief that judging the visual arts is a highly subjective matter and the purpose of this exercise is to see how much agreement exists among our members and to sharpen and clarify our judgmental skills.



Among artists, at a juried exhibition opening, a broad range of emotions is on display.

Reactions ranging from an awardee's obsequious, "...finally a juror who understands what I'm trying to communicate; I think I'll go over

and shovel his driveway tomorrow," to the rejectee's lament, "Where did he get his art training, at the Anoka School of Arc Welding and Animal Husbandry?"

Most folk, however, react with the typical Minnesota stoicism, "rejection builds character, or wait'll next year."

Should be fun. Jack O'Leary will manage the affair.

### MnWS NEW MEMBERS

Michelle Basman

Tim Bhajjan

James Kuether

Eve Tambornino

We have 296 paid members.

*(Check the label on your newsletter to see when your membership dues are due.)*

### MnWS Website

[www.minnesotawatercolors.com](http://www.minnesotawatercolors.com)

#### The MnWS website offers many opportunities

Not only does the MnWS website have pages for "Event Info" and "Become a Member" it also has a page for members to list their websites under "Member Links." It also has a page for members to list workshops they are offering and awards they have currently received under the "Happenings" page. Also, view past issues of the "Newsletter" and "Recent Show Awards."

To submit information to the MnWS website e-mail our web master at [webmaster@minnesotawatercolors.com](mailto:webmaster@minnesotawatercolors.com)

## from the President



Cathy Hearing officially handed over the gavel this week and I immediately knew I was near the bottom of a technical learning curve. I also know that some of you are also faced with the mysteries of technology and like many I avoided the issue by having my kids do it for me. It's time for me to be humbled as I try to acquire some needed skills. Cathy and her husband Dave have led our

organization further into this web world and now we have created a new job on the board. Peter Sohal has volunteered to be our technical chair and we welcome his experience! Dave Hearing has done so much to our website, including accepting paypal for show registration! I hope all of you will go to the website and continue to do so as we add new features (and remember to share your thoughts on our website). Deb Magelssen is putting us on facebook as well so watch for the Minnesota Watercolor Society fan page. As time goes by I'll update you on my new experiences with the web as it pertains to my art and our organization. I look forward to articles in the Newsletter that will add to my skills with the web.

Our new year is here and I look forward to Jack O'Leary's September presentation as we all become jurors for the evening. Our demos, discussions and growing lending library give us inspiration and lead us to new skills. The meetings also give us time to say hi to friends and welcome new artists to the MnWS. We also provide time to socialize, during art openings, easel night in December and the pot luck and slide presentation in January. Don't forget to come to our Fall Show Opening Oct. 14, 2010. If you aren't in the show come for the inspiration and camaraderie. This year we will offer another Members Day in June, an entire day of demos, lunch and plein air painting.

The five day workshops provide hands on education and plenty of opportunities to make new friends and increase the network of artists we all need to refuel. The two day workshops also offer those opportunities and fill quickly since they can be tucked into our busy schedules more easily.

We pull all of these opportunities together along with tips for artists and news of member activities in our Brush Strokes. Please consider submitting an article to Theresa Weseman, our able editor.

The plans for this year have come to be in large part from the needs and ideas you have shared with the board. Each of us appreciates your insight and we know that the future vitality of this organization rests in our ability to meet the needs of our members. Our newsletter provides our emails and I welcome your comments. Some of our members travel a long distance to come to meetings, show events and workshops, and all of us need to feel we are part of a dynamic organization well worth squeezing into our busy lives. I look forward to hearing from you and while you share your ideas remember to remind me that learning new things is well worth the pain of that learning curve!

I look forward to seeing you in September, cool and recovered from this summer heat!



### BOARD OF DIRECTORS

<b>President</b>	Deb Chapin, 952-890-8684 debchapin@hotmail.com
<b>Past President</b>	Catherine Hearing, 651-777-8158 cathy@chearding.com
<b>Vice President</b>	Open
<b>Secretary</b>	Dianne Jandt, 952-891-2375 artistjandt@aol.com
<b>Treasurer</b>	Georgia Kandiko, 952-445-3406 jgkandiko@msn.com
<b>Exhibition, Fall</b>	Sonja Hutchinson, 952-471-0098 sonjahutchinson@mchsi.com
<b>Exhibition, Spring</b>	Deb Magelssen, 651-464-5326 debmagelssen@yahoo.com
<b>Historian</b>	Marian Alstad, 612-824-6460 mardi4011@aol.com
<b>Hospitality</b>	Phyllis Winther, 952-474-7756 exel3@aol.com
<b>Librarian</b>	Mary Brainard, 952-894-3578 brainard@q.com
<b>Membership</b>	Carol Wingard, 612-396-6120 cjwin48@hotmail.com
<b>Newsletter</b>	Therésa Weseman, 952-200-8592 tweseman@earthlink.net
<b>Program</b>	Judy Haeny, 612-866-3670
<b>Publicity</b>	Kathleen Riopelle, 612-869-0352 kkriopelle@att.net
<b>Technology</b>	Peter Sohal, 612-501-0524 petersohal@hotmail.com
<b>Workshop</b>	Kathleen Sovell, 612-374-3195 jksovell@comcast.net Susan Zinschlag, 651-437-9327 s.m.zinschlag@att.net Dianne Jandt, 952-891-2375 artistjandt@aol.com
<b>Northstar Liaison</b>	Marilyn Jacobson gjake@comcast.net

### BRUSHSTROKES

<b>Editor</b>	Therésa Weseman
<b>Mailings</b>	Bev Beckman
<b>Proofreader</b>	Jeanne Long

### Website

www.minnesotawatercolors.com

### BrushStrokes Newsletter

BrushStrokes is published September, October/November, December/January, February/March, April/May, June

**MnWS BrushStrokes Editor & Advertising**  
10910 Quebec Ave. S., Bloomington, MN 55438  
tweseman@earthlink.net

# Watercolor Tips...

By Catherine Hearing

One of the hardest things to achieve in watercolor painting is clear, beautiful, transparent color.

To do this requires some up front thought and consideration of the paints that you will be using. There are several important considerations. The first is to make sure that most of your pigments are transparent rather than opaque. Opaque watercolors contribute to the “muddy” look that we want to avoid.

Next, consider color temperature in the pigments that you choose. If you choose a cool blue and want to make beautiful violets, make sure that the red you choose is a cool red, as well. If you want a neutralized low intensity violet, you could choose a warmer red.

The third consideration, and perhaps the most effective, is to limit your palette. The fewer colors that you use, the more unified and harmonious the painting will appear. Try painting a series of small paintings using different triads. The primary triad is an easy one to work with (red, yellow, blue). Initially, be sure that all three primary colors have the same color temperature. Later on you can experiment with low and high intensity colors combined. Paint the same picture with a secondary triad (orange, green, violet) or a tertiary triad (yellow-orange, blue-green, red-violet; or red-orange, yellow-green, blue-violet). You will immediately see the differences and possibilities with each of these palettes. The limited palette will eliminate the appearance of any jarring color in your painting. Many times we add a color because we think it is the right one, but it has no relationship to any of the other colors in the painting and appears out of place.

The last suggestion is to wet your paper and let the colors mix on their own. Add brush loads of the colors



Photograph from [www.istockphoto.com](http://www.istockphoto.com)

and let them mix in the water on the paper. Let the pigments find their own equilibrium and settle into the paper where they will. You can encourage movement of the pigments by moving your paper around in different directions, but let the water move the pigment. This will give you much more brilliant color than mixing the color on the palette. We frequently over-mix the color and it becomes dull. Mixing on the paper creates many beautiful color gradations. Experiment with these suggestions to come up with the clarity of color that you are searching for.

*If you have tips you'd like to submit to the newsletter e-mail the editor at [tweseman@earthlink.net](mailto:tweseman@earthlink.net) or write her at 10910 Quebec Ave. S., Bloomington, MN 55438.*



## Minnesota Watercolor Workshop

**Oct. 4 - 8, 2010 (Monday-Friday)**

Linda Baker, AWS/NWS [www.lindabaker.biz](http://www.lindabaker.biz)  
**Sun, Shade, & Shadow in Watercolor**

Cost \$395 Members \$435 Nonmembers



In this workshop, Linda will share her techniques and enthusiasm for capturing a strong light source in her paintings. The use of light is a major focus of her paintings along with dancing shadows and

rich shaded areas. Through pouring, wet into wet, and direct painting she will demonstrate how to glaze and layer the light. Working from your own photos and sketches, she



will assist you in composition and design for a more dramatic result. Daily demonstrations, slide presentations, personal one-on-one consultations and critiques add to a fun-filled workshop.

Linda Baker, AWS/NWS has won many awards including the National Watercolor Society, the San Diego International Society, and the American Watercolor Society, including the High Winds Medal. Her work has appeared in numerous publications including *The Artist's Magazine*, *American Artist*, *Watercolor Basics*, and most recently the Spring 2008 issue of *Watercolor Magazine*.

Her work is currently on display at the 2010 American Watercolor Society where she was honored with the Alan Chiara Memorial Award.

Workshop Registration

**Linda Baker, AWS/NWS Sun, Shade, & Shadow in Watercolor Workshop** October 4-8, 2010 (Mon – Fri)

\$395 Members and \$435 Nonmembers

Location: City of New Brighton Family Service Center

For detailed information about the artist or workshop visit our website at: [www.minnesotawatercolors.com](http://www.minnesotawatercolors.com)

For inquiries contact: Kathleen Sovell, workshop chairperson, 612-374-3195 or e-mail [jksovell@comcast.net](mailto:jksovell@comcast.net)

Name \_\_\_\_\_

Address \_\_\_\_\_

City \_\_\_\_\_ State \_\_\_\_\_ Zip \_\_\_\_\_

Phone \_\_\_\_\_

E-Mail \_\_\_\_\_@\_\_\_\_\_

(MnWS does not share e-mail addresses with others.)

Please send fee or \$125 deposit for Linda Baker's workshop.

Cancellations in writing must be received no later than two weeks prior to workshop to qualify for a full refund. If the workshop is cancelled, money will be promptly refunded.

Amount Enclosed: \$ \_\_\_\_\_

Make checks payable to Minnesota Watercolor Society and mail with form to: Workshops, Susan Zinschlag, 2353 Glacier Way, Hastings, MN 55033-3757  
 Phone: 651-437-9327 or E-mail: [s.m.zinschlag@att.net](mailto:s.m.zinschlag@att.net)

### Northstar Meetings

*Held at The Roseville Oval at Roseville Skating Center, 2661 Civic Center Dr. Directions from MPLS, take Hwy. 280 to Hwy 36 and East to Snelling North Exit, turn right on County Road C, drive past Hamline Ave. and left into Civic Center Drive before Lexington Ave.*

**Workshop: Oct. 18 - 22, 2010**

Kate Worm, *The Still Life In Motion*

More info is on the Northstar website: [www.northstarwatercolorssociety.com](http://www.northstarwatercolorssociety.com).

### MnWS Board Meeting Notes

- Clarification on continued membership is needed to retain points earned towards signature status. Dianne Jandt will contact members who are in jeopardy of losing points.
- Next newsletter is Oct./Nov. deadline is Oct. 15.
- Karen Knutson's MnWS workshop in Nov. is full.
- Room still available in Linda Baker's MnWS workshop. See above.
- Vice-President position open.

### From the Book Shelf

Please return checked-out books.

Thank you,  
 Mary Brainard, Librarian,  
[brainard@q.com](mailto:brainard@q.com).



**workshops and classes****Want to find classes?**

Visit the MnWS website at [www.minnesotawatercolors.com](http://www.minnesotawatercolors.com) and click the "Happenings" link at the top of the page.

To include your listings on the website please e-mail information to [webmaster@minnesotawatercolors.com](mailto:webmaster@minnesotawatercolors.com)

**Metroframe.com**  
METROPOLITAN PICTURE FRAMING  
classic exhibition frames wholesale



Complete  
framing advice  
on the web.

952-941-6649  
[www.metroframe.com](http://www.metroframe.com)

**MEMBER happenings****Send member news to:**

BrushStrokes, 10910 Quebec Ave. S., Bloomington, MN 55438 or e-mail [tweyman@earthlink.net](mailto:tweyman@earthlink.net). Images are welcome and used as space permits.

- ▶ **Mary Axelson** has work on exhibit at the Eden Prairie City Hall through September.
- ▶ **Bonnie Crouch's** painting entitled "Spills KILL!" was accepted into the Minnesota State Fair Fine Arts Show.
- ▶ **Catherine Hearingd** has paintings showing in the New England Watercolor Society 12th Biennial North American Open Show, Sept. 24 - Oct. 24. She was accepted into the Minnesota State Fair Fine Arts Show and will be exhibiting in the Hudson Hospital Healing Arts Program through Sept. 19. Catherine also has three paintings included in the book "Best of America Watermedia Artists Vol I." You can preview the book at [www.bestofartists.com](http://www.bestofartists.com)
- ▶ **Harry & Lois Heim's** exhibit "Heim Art Retrospective 1944 - 2110" will be showing Sept. 5 - Oct. 31 at Gethsemane Lutheran Church. The reception will be Sept. 26 in the Fireside Gallery from 9:30 a.m. - 2 p.m.
- ▶ **Mary Anne Kinane's** painting "Climatis & Warblers" was accepted into Visual Arts Minnesota, Paramount Gallery in St. Cloud, Minn. The show runs June 7 - July 9. [maryannekinane@comcast.net](mailto:maryannekinane@comcast.net)
- ▶ **Jeanne Long** had a painting "Summer Light" accepted into the Minnesota State Fair this year, and a selection of her paintings is currently available at The Linden Tree in Southwest Minneapolis.



"Spills Kill!" by Bonnie Crouch

# Minnesota Watercolor Society 2010 Fall Open Exhibition

Our Members Fall Exhibition is coming up and we hope to see you there. Here are a few key reminders.

**Registered Artists:**

Drop your work off at the Burnsville Performing Arts Center:

Monday - Wednesday, Sept. 13-15  
Between 11 a.m. - 1 p.m.

**Reception and Awards Ceremony:**

Invite your friends and family to the reception and awards ceremony on Thursday, Oct. 14, 6 - 8:30 p.m.  
Awards ceremony 7 p.m.

**Exhibition Dates:**

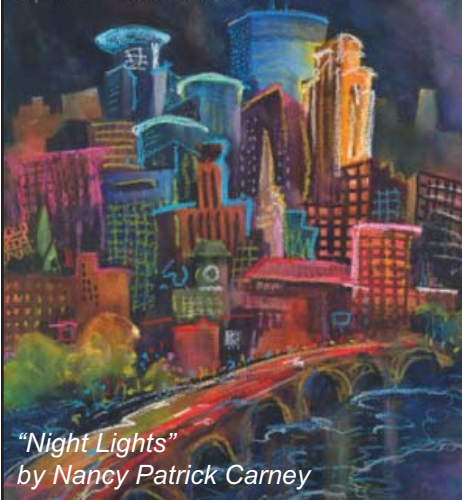
The exhibition will be on display at the Burnsville Performing Arts Center Sept. 23 - Nov. 13.

**Pick Ups after the Show:**

Please arrange to pick up your work at the Burnsville Performing Arts Center: Monday - Tuesday  
Nov. 15-16  
Between 11 a.m. - 1 p.m.

**ILLUMINATED**

Minnesota Watercolor Society Fall Show  
September 23 - November 13, 2010



"Night Lights"  
by Nancy Patrick Carney

**Agnes Fine** passed away on July 30. She had been active in the MnWS in the past. She was a master gardener and used her garden blooms as subjects for her paintings. She was part of the "Marian and Friends" show at the Edina Art Center this summer. Many of you knew Agnes well. She will be missed.

**Call for Entries****Minnetonka Center for the Arts Holidays Juried Show and Sale**

The Holiday Gift Show is open to all visual artists. Submission deadline Sep. 24, 2010. Show runs Nov. 18 - Dec. 23 Artists can download an entry form at: <http://www.minnetonkaarts.org/events.html>

## MnWS calendar

*Programs are held the second Thursday of the month at 7:00 p.m.*

**Sept. 9** Ever thought about being a juror? Join us for this role playing exercise.

**Oct. 14** MnWS Fall Open Exhibition, "Illuminated." Awards reception will be held at Burnsville Performing Arts Center from 6 - 8:30 p.m.

**Location:** Christ Presbyterian Church, 6901 Normandale Blvd., Edina, MN (Corner of 70th St. S. and Hwy 100)

## MEMBERSHIP APPLICATION

**Mail your application and check payable to Minnesota Watercolor Society to:**

Carol Wingard, Membership Chair  
10427 Fawns Way  
Eden Prairie, MN 55347

### MnWS Membership Dues:

- Single \$30
- Couple/Family: \$40
- Seniors (65+) \$25

Name \_\_\_\_\_

Address \_\_\_\_\_

City \_\_\_\_\_

State, Zip \_\_\_\_\_

Telephone \_\_\_\_\_

Email \_\_\_\_\_

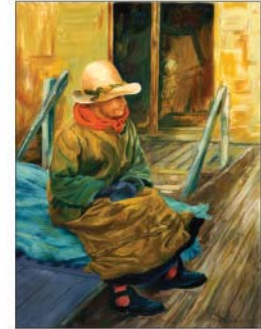
Check here to have your name removed from the list sent to our exhibition award donors who mail product information to our members.



**HUSOM & ROSE**  
PHOTOGRAPHICS  
715.792.5556

## FINE ART PRINTING

*Professional giclee print services using the finest quality paper, canvas and ink.*



© A. Rosasco

### Studio Ramble

visit Husom & Rose • Site #13  
September 25-26th • 10:00 - 5:00  
W8484 162nd Ave. Hager City, WI

[www.husomandrose.com](http://www.husomandrose.com)

3 miles from Red Wing, MN

*— MnWS Mission Statement*  
*"To further development*  
*of the watercolor artist*  
*by providing a*  
*supportive environment*  
*with education and exhibition*  
*opportunities, and to promote*  
*public appreciation and greater*  
*visibility of the art."*

10427 Fawns Way, Eden Prairie, MN 55347-5117

