

## February Meeting: Portrait Demonstration

by Ceile Hartleib



▲February Demo Artist Ceile Hartleib with her painting "Utopia".

Although I paint a wide variety of subject matter in watercolor, pastel and oil, I find watercolor portraiture from life to be the most difficult and challenging of anything I do. The lighting must be good, preferably natural light from a north window. The model must be cooperative and somewhat relaxed—though not too relaxed. I had one fall asleep on me!

In the portrait demonstration, I will stress composition, drawing, and value as being more important than color. I build up my watercolor portraits with washes, or glazes, starting with a light pinkish tone over everything, lifting out highlights along the way, then proceeding to add layers of various colors. I find purples, blues, yellows, greens, oranges, reds and pinks and float them in where I —cont. on p.3



▲"Playing with the Hose" by Ceile Hartleib.

## Fall Workshop—Adventures in Color with Ken Hosmer

This workshop is especially for anyone wishing to paint with dramatically enriched, yet believable color. Paint, have fun, and learn more than you imagined possible!

In this powerful workshop, Ken presents two valuable learning tools: a unique color system, which is unsurpassed for developing pure transparent color schemes; and the Hosmer Design Model, a simplified way to organize and creatively interpret painting ideas. All watercolor demonstrations stress the spontaneous, splashy look. (New in 2005, special sessions on minimal painting and color zoning.)



▲Fall Workshop Leader Ken Hosmer.

Ken has a special gift for clearly explaining his artistic method as he paints. As a devoted teacher, he organizes ideas into simple terms and offers plenty of personal help and encouragement, making the class ideal for beginning and advanced students. A typical day might include demonstration and lecture in the morning with class work time and individual help in the afternoon. Often the class ends with a critique session. Ken Hosmer has been a guest workshop instructor for over 70 art organizations across the U.S. and in exotic locations such as Hawaii, Italy, Greece and Mexico. *The Artist's Magazine* has published a number of his articles including, —cont. on p.3

Whether the ground hog sees his shadow or not, we here in Minnesota still have six more weeks of winter (or more!) to endure. Make it go a little faster by coming to Minnesota Watercolor Society's February meeting, and bring a painting, finished or unfinished, to share with the group.

In honor of that sleepy, grumpy little rodent named Punxsutawney Phil,

February's suggested painting theme is

**Shadows**

See you on February 10!

Also in this issue of *BrushStrokes* . . .

- ♦Marian Alstad and Barbara Lanzo Display at Martin Luther Manor —p.3
- ♦New Member Offers Watercolor Supplies Online—p.4
- ♦Corrections to Spring Show Prospectus—p.3

## Don't Forget!

**Spring Show  
slide deadline:**

**February 19, 2005**

**show dates: March 31–April 28,  
2005**

**making waves**  
minnesota watercolor society spring exhibition

## MESSAGE *from the President*



When I began coming to meetings a few years ago, I looked at it as a way to connect with other artists, share ideas, and learn more about watercolor. I knew only a couple people, just familiar faces really. I'd sit in the back, talk to another member or two on coffee break, and preferred to be slightly anonymous. After a few months, Sandy Muzzy asked me if I'd like to be Program Chair on the Board of Directors. Something about having an official 'title' scared me, not to mention the fact that it seemed my time was already full. Besides, what did I know about scheduling quality programs for the group? I didn't know many artists, had never even been asked to serve on a committee before. Ignoring my instincts, I accepted her invitation. As it turns out, I didn't even have a chance to start that position, because the Board was in more dire need of a newsletter editor. Because I was familiar with the software programs and had the computer equipment from my career as an illustrator, it was easier for everyone. And it was more of a 'behind the scenes' job, definitely up my alley. Kris Fretheim got me started, and answered all my questions. It was work, daunting at times, but it felt good to help out. I knew I was needed at the time, and there's a satisfaction in that that's the very essence of volunteer work.

The Minnesota Watercolor Society is a wonderful organization, and along with the Northstar Watercolor Society, offers its members a chance to see demonstrations by a wide variety of talented painters, to exhibit their paintings in great venues around the Twin Cities, take a well-organized workshop, and just 'mingle' and enjoy treats and coffee with friends and fellow artists once a month. I encourage everyone to take advantage of this. Unfortunately, it's easy to forget these organizations need the strong participation of members to keep them running and effective. The Board of Directors consists of a great group of people who enjoy what they do, but they all have lives just like you. To prevent burnout, therefore, most positions run for a term of two years—with the exception of Marian Alstad, who is our Membership Chair for life :-). Some have been in their positions longer, because they choose to be. But when a volunteer's term is up, it's vital that we get someone stepping in as soon as possible.

Anne Graves is currently seeking her replacement as Program Chair starting next fall. All our programs for this year are taken care of. Responsibilities include contacting local artists to perform demonstrations and making sure the church is prepared for our monthly meetings. If you have artists you'd like to see come do our programs, here's your chance to pick them. Ceile Hartleib and her husband, Terry Kayser, agreed to step in as Fall Exhibition chairs during January's meeting (thanks again!). We are going to need someone for Spring Exhibition chair starting next year, as Mary Hanson is done after this spring's show. This is a position that could be filled by a small group of friends as well. Responsibilities include locating a venue, finding a judge, and making arrangements for the awards banquet. I realize this sounds tough, but our exhibitions are the highlight of the year. And remember, it's only for two shows and then it's someone else's turn. When I agreed to become President, I didn't have a clue what was involved, and as I mentioned at our last meeting, I still don't half the time. But our Board is full of experienced people who help out at the drop of a hat. All you have to do is come to the meetings and ask questions. The only job requirement is that you're willing to help out.

When names get tossed around for the open positions, it's natural to think of familiar members who have taught or volunteered before. The 'old reliables'. But newer members need to realize that there's no better way to become a 'familiar face' than by diving in and helping out. It's not forever, and you might surprise yourself and have a great time.



### BOARD OF DIRECTORS

<b>President</b>	Andrew Evansen 651-480-1742
<b>Vice President</b>	MarySue Krueger 952-937-0973
<b>Secretary</b>	Emmy White 612-825-8312
<b>Treasurer</b>	Gary Marquardt 952-471-0476
<b>Exhibition, Fall</b>	Holly Landauer 651-452-8917
<b>Exhibition, Spring</b>	Mary Hanson 952-476-6896
<b>Hospitality</b>	Sandra Muzzy 952-854-7677
	Tom Nelson 612-377-3943
<b>Librarian</b>	Ruth Valgema 952-920-3975
<b>Membership</b>	Marian Alstad 612-824-6460
<b>Member-at-large</b>	Terrie Christian 763-546-5266
<b>Newsletter</b>	Lynne Baur 715-688-2680
<b>Program</b>	Anne Graves 763-550-9686
<b>Publicity</b>	Kris Melby 651-731-0629
<b>Workshop</b>	Bonnie Crouch 952-945-0682
	Dianne Jandt 952-891-2375
	John O'Leary 952-888-0638

### PAST PRESIDENTS

<b>2002-2004</b>	Sandra Muzzy 952-854-7677
<b>2000-2002</b>	Keith Donaldson
<b>1998-2000</b>	David Rickert
<b>1996-1998</b>	Jan Fabian Wallake
<b>1994-1996</b>	MarySue Krueger
<b>1992-1994</b>	Carol Gray
<b>1990-1992</b>	Gwen Leopoldt
<b>1988-1990</b>	Harry Heim
<b>1986-1988</b>	Sally Burns
<b>1983-1986</b>	Jeanne Emrich

### BRUSHSTROKES

<b>Editor</b>	Lynne Baur 715-688-2680
<b>Columnist</b>	Ruth Valgema
<b>Advertising Mgr.</b>	Mary Hanson 952-476-6896
<b>Mailings</b>	Joanne Bauch 763-546-2169
	Beverly Peterson 763-533-7757

### HOW TO REACH US:

INFORMATION•VOICE MAIL LINE

952-996-9228

WEB SITE: [www.minnesotawatercolors.com](http://www.minnesotawatercolors.com)

### BrushStrokes Newsletter

BrushStrokes is published monthly, September through June. Deadlines are the 15th of the month. Send letters to the editor and art related stories that help inform or educate members to:

**MnWS BrushStrokes Editor**

1830 Dutch Heritage Ct.

Baldwin, WI 54002-5155

[lbaur@mac.com](mailto:lbaur@mac.com)

(please do not use l.baur@att.net--account no longer active)

**Advertising Placement**

For ad rates or to place advertising, contact

Mary Hanson 952-476-6896



## Portrait Demo

cont. from p. 1—

see them, sometimes causing my students to gasp. I soften edges as I go, so that the finished look is smooth and flowing.

What really gets me excited about painting, in general, is the way light falls across the forms. Without a strong directional light, the forms would appear flat and uninteresting. I like the drama and the excitement of strong



▲ "Portrait of Jackie and Drew Phelps" by Ceile Hartleib.

almost three dimensional forms. I love working directly from nature. From spring thru fall I am outdoors doing plein-air landscape, and sometimes, but not always, including figures in the landscapes. I am happiest when I can work all day outdoors. It's exhausting, but so exhilarating.

While living in my native state, Ohio, I studied with several prominent painters, including Allan Banks, Carl Samson, Robert and Elnor Hilty, had classes at the Firelands Campus of Bowling Green State University, and drove weekly to Bay Village to study with artists who taught at the Cleveland Institute of Art. Workshops with Daniel Greene and several artists affiliated with the Cincinnati Art Club rounded out my studies at that time.

In 1987 I moved to the Twin Cities and began a four-year fulltime program at Atelier Le Sueur, Excelsior, MN, where I was taught how to see. The basics of composition, accurate drawing, impressionistic seeing, were stressed. An additional year in an advanced program with noted artist Stephen Gjertson completed my studies.

I've been painting full time since graduating in 1992. My studio, which I share with my husband, Terry, where I spend most of the winter, and teach classes, is located in the Lowertown area of St. Paul. I teach watercolor at my home, and teach plein-air landscape and watercolor classes and workshops at the Atelier.

I have won awards in the MNWS shows, TWSA, and was a finalist in the Artists Magazine Annual Competition a few years ago. My paintings hang in galleries in the Twin Cities, Rochester and Cincinnati, Ohio, and in collections in North America, Japan, and the Czech Republic. ■

## Fall Workshop

—cont from p. 1

"Four Steps to Creative Color," reprinted in *Watercolor Magic*, 1993, and "How to Paint Backward", *Watercolor Magic*, Summer 1994. His painting "Spring Calves" is included in *Splash 4: The Splendor of Light*, published by North Light Books in 1996, and the painting "Dancers" is featured in *International Artist* magazine, Master Painters of the World—U.S. Showcase, June/July 2001. Ken's art instruction videos include *Color Dynamics II*, *More Dynamic Color*, *Secrets of Flower Painting*, *Watercolor Basics*, *Figures in Motion*, and *Ken Hosmer Paints Animals*. He is a signature member of the Southwestern Watercolor Society. ■

Ken can be found on the internet at: [www.watercolor-online.com/KenHosmer/](http://www.watercolor-online.com/KenHosmer/)



▲ "Spring Calves" by Ken Hosmer.

▼ "Fire and Ice" by Ken Hosmer.



## Now Up at MLM— Marian Alstad & Barbara Lanzo

From mid-January to mid-March, members Marian Alstad and Barbara Lanzo will have their work on display at Martin Luther Manor.

Marian Alstad is our membership chair so she is no stranger to the organization. She has been painting in watermedia for over 45 years.

She says, "I sold my first venture into watercolor which made me enthusiastic about the medium. My first major instructors were Kay Sharkey, Zoltan Szabo, (cont on p. 4)



▲ Marian Alstad, Artist and Membership Chair Extraordinaire.

## Corrections to Spring Show Prospectus

Due to an editorial error, the information concerning commissions on sales at the MnWS Spring Show was omitted from the Spring Show Prospectus.

Please note that Minnetonka Center for the Arts will handle sales at our Spring Show, and will retain a 40% commission (or 30% if the artist is a member of the Minnetonka Center for the Arts).

We apologize for any inconvenience this omission may have caused, and hope this information reaches you in time to take into account as you set your prices for work submitted to the Spring Show.

In addition, the previously announced juror was unable to serve. The juror for our 2005 Spring Show will instead be Bela Petheo, St. Cloud artist and retired St. John's University Professor. ■

## MEMBER happenings

Send member news to: *BrushStrokes*, 1830 Dutch Heritage Ct., Baldwin, WI 54002-5155, or email to [lbaur@mac.com](mailto:lbaur@mac.com).

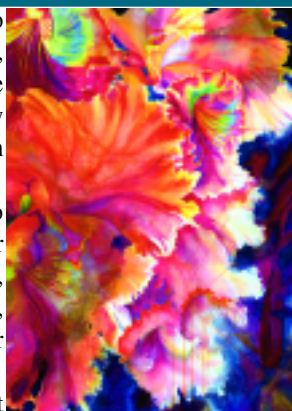
**Lynne Baur** (who actually does occasionally find a few moments to paint between assembling issues of *BrushStrokes*), will display "Leaf, Petal, Wing," a collection of about 40 nature-based watermedia paintings, at The Phipps Center for the Arts, 109 Locust Street, Hudson, Wisconsin. The show runs February 25–March 27, with a reception Friday, March 4 from 6:30–8:30 p.m., to which you are all of course cordially invited!

Watercolorist and brand-new member **Brian Roberge** is pleased to announce his new online art supply site dedicated exclusively to watercolor art supplies. Initially, he is stocking Arches 140 & 300 lb papers, cold press, hot press and rough, Arches watercolor blocks, watercolor field books, Winsor & Newton paints and brushes, Daler Rowney 14 ml watercolor tubes, daVinci brushes, Prismacolor watercolor pencils and other products.

The site can be accessed at [www.paintandpalette.com](http://www.paintandpalette.com). Check it out! As an added bonus, during 2005 his Paint and Palette site will be donating \$1 for every order received to help aid the Southeast Asia Tsunami victims. Details are on the site.

Congratulations Everyone!

It was a quiet month for submissions to Member Happenings. I'm sure more of you had something to announce in the February issue. Maybe it got lost the post-holiday recovery period? Send it in anyway, we'll print it in the next issue—we want to hear about *all* your awards, honors, and events big *and* small! The newsletter is for and about *you*, the amazing members of MnWS. Don't think your event or achievement is too minor to announce—if it's something you're happy and excited about, we want to celebrate it with you! ■



▲ "Orchid Tangle" by Lynne Baur

### Send 'Em Your Slides!

People have been asking me, "How did you get a show at the Phipps?" All I can say is "I sent them my slides." After that, . . . ? There's a huge supply of talent in our membership; wouldn't it be great to see more of our members's work in our local arts centers?

So, send 'em your slides. You never know . . . ■

[p.s. Just ask Nanci Yermakoff—a little bird tells me she's been selected to show her work at The Phipps in 2006-2007. Congratulations, Nanci!]

#### Arts Center Call Deadlines

Bloomington Art Center: March 31

The Phipps Center for the Arts: July 1

(Know of others? Send 'em in and we'll spread the news!)

### Space to Paint in Door County

Get a group together for a mid-winter intensive and enjoy Door County in the quiet season. The Peninsula Art School has Open Studio time February through April. There are weekend and weekday packages that include lodging, continental breakfast, buffet lunch and studio space. Share a room with a friend and prices range from \$160 to \$260.

Get a group together and have a paint-in, or do an impromptu workshop—bring your own students and instructor, and let Peninsula Art School worry about food, lodging and studio space. Have another idea or special requests? Call them and they'll try to make it happen for you.

Lodging is at the Homestead Suites, with two queen beds per room, indoor pool and gathering

## Welcome!!

### NEW MEMBERS

We have 369 paid members to date.

Fern H. Belling

Jeffrey O. Kasbohm

Ann Sundet

Sheryl Trondson

Launcelot G. Weber

Diane Wesman

## Alstad and Lanzo at MLM

—cont from p. 3

Frank Webb, and Christopher Schink. I have taught beginning and intermediate watercolor techniques at the Edina Art Center for nearly 20 years. Lately I have explored abstracts in acrylic paints. That is a new venue and is quite new and exciting. I like the idea of finishing my work at a later time when it has distilled for a few days and I can be objective about the final touches. I have no plans for retiring from the watercolor society or from painting or teaching because it keeps me vital and there is always a new technique that I need to try."

If you have up to 20 framed paintings you would like to share with the very appreciative audience of residents and staff (and visitors) at Martin Luther Manor, contact Sandy Muzzy at [giggles@pclink.com](mailto:giggles@pclink.com) or 952-854-7677. ■

[At press time, *BrushStrokes* had not heard from Barbara Lanzo. If possible, we will include a photo and information about her and her work in the March issue.—ed.]

spaces where you can continue your conversations with fellow artists. The Homestead is a quick walk down the hill from the School and the local YMCA is also within walking distance.

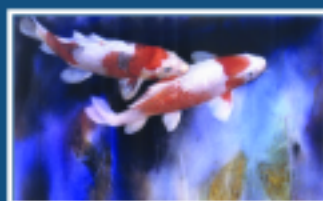
Call Karen at 920.868.3455 or email [registrar@peninsulaartschool.com](mailto:registrar@peninsulaartschool.com) for reservations.

BLOOMINGTON ART CENTER  
[www.bloomingtonartcenter.com](http://www.bloomingtonartcenter.com)

952-563-8587



Karlyn Holman Mar 28-Apr 1  
Register through MnWS



Cheng-Khee Chee  
Jun 13-17



Frank Webb  
Sept 19-23

YOUR WORKSHOP HEADQUARTERS



## the WORKshopper

Send Workshop listings to: *Workshopper*, 1830 Dutch Heritage Ct., Baldwin, WI 54002-5155, or email to lbaur@mac.com.

### Marian Alstad

►Antigua and Lake Atitlan, Guatemala, February 17 to 26, 2005  
 ►Ireland, May 5 to 16, 2005  
 ►Tuscany, July 9 to 16, 2005  
 ►Greece, Sept 29 to Oct 9, 2005  
 For details call Marian Alstad at 612-824-6460 or e-mail mard4011@aol.com ■

### Jan Fabian Wallake

►2006–June 19-23. Art-in-the-Mountains, Bend, Oregon. Contact: Debra Prater, 541-923-2648.

►2006–Nov. 11-14. Brevard Watercolor Society, Cape Canaveral, FL. Contact: Linda Neal, 321-751-5520.

Jan has a once-a-month, three-hour class in Roseville. If you are interested in joining this fun and friendly group, call Jan at 651-351-1301 (no long term commitment—come when you can, pay only for the class you attend). ■

### Charlotte Laxen

►The Palette of Provence, July 20–31, 2005. Lavender and sunflower fields, markets and magical scenery; 6 nights in Bonnieux, 4 nights in seaside village of Cassis. Limited to 12 artists. Contact: Scottie Watson, 952-285-1272 or scottiew1@msn.com. ■

### Upcoming MnWS Workshops

*Feb 5-6, 2005–Weekend  
 Workshop with Andy Evansen  
 Mar 28–Apr 1, 2005–Karlyn  
 Holman*

*Oct 11-14, 2005–Ken Hosmer  
 For MnWS workshop information contact  
 Bonnie Crouch, coordinator (952-945-0682)  
 Dianne Jandt, registration (952-891-2375)  
 or John O'Leary, publicity (952-888-0638)*

Lost your Spring Show Entry Form?  
 Need a Workshop Registration Form?  
 No Problem!

MnWS Entry and Registration forms  
 are now available for download from our website at

**www.minnesotawatercolors.com**

## Northstar News

### Workshops

**May 16-20, 2005: Carla O'Connor**

### Meetings

**February 17. Michaelin Otis demo**

**March 17. Calvin deRuyter demo**

**April 21. Ellen Diederich demo**

**May 13-15. Art on a Line Show & Sale**

**May 19. Transparent Watercolor  
 Society slides**

Meeting location is Centennial United Methodist Church, 1524 W. County Rd. C2 at Snelling in Roseville.

More Easels  
 More Brushes  
 More Paints/Mediums  
 More Pads, Blocks, Paper, Books  
 Custom Framing  
 Creative Gifts

**More than just an Art Store!**  
**Discover Art Materials!**

**ArtMaterials**  
 www.ArtMaterialsOnline.com

2726 Lyndale Ave South, Minneapolis, MN 55406-1301  
 612.872.8088 800.363.7709 FAX 612.872.2266



## Capturing Athens and Santorini Scenes

(by Brush, Lens, and Experience)  
 Instruction by MARIAN ALSTAD  
 Sponsored by Edina Art Center  
 Sept. 29–Oct. 9, 2005  
 Painters or Photographers

For more information:  
 Call Babs Wheeler at 952-445-8151  
 or tollfree at 1-866-585-4690.  
 Email babs97@worldnet.att.net

February is the last chance to register.  
 Downpayment is due now.

## MNWS*calendar*

*Programs are held the second Thursday of the month at 7:00 pm.*

### **February** .....

February 10: Ceile Hartleib Demo—  
portraits

### **March** .....

March 10: Mike Wohnoutka—  
illustrating children's books

**March 31:** Spring Show Reception at  
Minnetonka Center for the Arts

### **April** .....

Spring Show reception (see above). No  
regular meeting in April.

### **May** .....

May 12: Dan Weimer—landscapes

**LOCATION:** Christ Presbyterian Church,  
6901 Normandale Blvd., Edina, MN  
(Corner of 70th St. S. and Hwy 100)

## MEMBERSHIP APPLICATION

### MnWS Membership Dues:

- ☐ Single: \$25
- ☐ Couple/Family: \$35
- ☐ Seniors (65+) \$20

Name \_\_\_\_\_

Address \_\_\_\_\_

\_\_\_\_\_

City \_\_\_\_\_

State \_\_\_\_\_ Zip \_\_\_\_\_

Telephone \_\_\_\_\_

Email \_\_\_\_\_

☐ Check here to have your name removed from  
the list sent to our exhibition award donors who  
mail product information to our members.

Mail your application and check payable  
to Minnesota Watercolor Society to:

Marian Alstad, Membership Chair  
4011 Chicago Ave. S.  
Minneapolis, MN 55407-3142

## Wholesale Framing Supplies

Contemporary hardwood frames,  
Nielsen metal frames, matboards,  
custom cut mats, foamboards, glass &  
plexiglass, framing tools & supplies.  
Online ordering & framing advice.

**www.metroframe.com**

Call for a free color catalog.  
952-941-6649 / 800-626-3139

**METROPOLITAN** PICTURE FRAMING

**Wet Paint**  
inc.  
Artists' Materials & Framing

1684 Grand Avenue Saint Paul  
651.698.6431 open 7 days a week  
info@wetpaintart.com www.wetpaintart.com

*Over 1300 watercolor brushes,  
Over 1200 watercolors & mediums,  
& plenty of paper in sheets, pads & blocks*



4011 Chicago Avenue South, Minneapolis, MN 55407-3142

*"To further development  
of the watercolor artist  
by providing a  
supportive environment  
with education and exhibi-  
tion opportunities, and to  
promote  
public appreciation and  
greater visibility of the art."*

— MnWS Mission Statement