

# MnWS calendar

Programs are held the second  
Thursday of the month at 7:00 p.m.

|         |  |
|---------|--|
| Oct. 9  | Fall Show (Plymouth<br>Congregational Church)      |
| Nov. 13 | Rick Kochenash                                     |
| Dec. 11 | Easel Night  |
| Jan. 8  | TWSA Pat Undis and<br>Karen Knutson<br>may narrate |
| Feb. 12 | Fred Somers  |
| Mar. 12 | Ellen Jean Diederich                               |
| Apr.    | Spring Show  |
| May 14  | Nels Femrite                                       |

**Location:** Christ Presbyterian  
Church, 6901 Normandale Blvd.,  
Edina, MN (Corner of 70th St. S.  
and Hwy 100)

# MEMBERSHIP APPLICATION

Mail your application and check payable  
to Minnesota Watercolor Society to:

Marian Alstad, Membership Chair  
4011 Chicago Ave. S.  
Minneapolis, MN 55407-3142

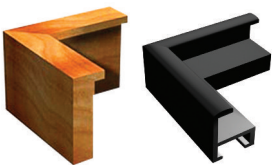
## MnWS Membership Dues:

- Single \$30
- Couple/Family: \$40
- Seniors (65+) \$25

Name \_\_\_\_\_  
Address \_\_\_\_\_  
City \_\_\_\_\_  
State, Zip \_\_\_\_\_  
Telephone \_\_\_\_\_  
Email \_\_\_\_\_

☐ Check here to have your name removed from  
the list sent to our exhibition award donors who  
mail product information to our members.

Metroframe.com  
classic exhibition frames wholesale




Complete  
framing advice  
on the web.

952-941-6649  
www.metroframe.com

  
**Wet Paint inc.**  
Artists' Materials & Framing  
1684 Grand Avenue Saint Paul  
651.698.6431 info@wetpaintart.com  
www.wetpaintart.com  
Your most complete local source for  
watercolors & mediums, brushes,  
watercolor papers, pads & blocks

  
**Brush Strokes**  
Volume 29, Number 8  
October 2008

Minnesota Watercolor Society Fall Exhibition  
September 21 - November 12, 2008  
  
**Seasons in the City**  
Plymouth Congregational Church  
1900 Nicollet Ave  
Minneapolis MN  
Reception & Awards Ceremony  
Thursday Oct. 9th 6 - 8:30 pm

Join us for our  
**Minnesota Watercolor Society  
Fall 2008 Exhibition**

**Seasons in the City**  
Reception and Awards Ceremony

**Thursday, October 9, 2008**  
6-8:30 p.m. (Awards 7 p.m.)

**Plymouth Congregational Church**  
1900 Nicollet Ave.  
Minneapolis, MN

— MnWS Mission Statement  
"To further development  
of the watercolor artist  
by providing a  
supportive environment  
with education and exhibition  
opportunities, and to promote  
public appreciation and greater  
visibility of the art."

4011 Chicago Avenue South, Minneapolis, MN 55407-3142



## from the President



this position.

Part of the job of being president of this organization is to write a monthly article for the newsletter. I am finding that a lot harder than looking at a white piece of watercolor paper. I never seem to have a problem filling up the watercolor paper, but the blank computer screen is an issue! I hope that I will improve as I move into this position.

I am looking forward to my term as president of the MN Watercolor Society. As Fall Exhibition Chair for the past two years, I have been impressed by the willingness of our members to help out and volunteer. We never seem to be at a shortage when we need help. I first joined MnWS in 2004, after seeing the fall 2003 show at the Phipps. I was really impressed with the quality of paintings displayed. I decided that I would like to become involved in the organization. I attended an occasional general meeting, but being on the wrong side of town, (Lake Elmo) I did not get to many meetings. I did help out at some of the show drop-offs and enjoyed the people that I met and worked with.

After volunteering for a couple of years, I was asked if I would be interested in chairing the fall exhibition. I decided that it would be a great way to become involved and to meet more of the members. I have truly enjoyed being a part of the organization and I urge all of you who want to meet more members to become a volunteer.

I have been painting watercolors for more than 30 years. I spent several years getting started out of school and then put it on hold to raise my family. Now that my two kids are grown, I have come back to my artwork fulltime. I work from my home studio in Lake Elmo and I am thoroughly enjoying myself. I show in local and national shows and have been teaching for the past six years. I can't imagine doing anything that I love more than painting. One of the nice things about an organization like MnWS is the ability to connect with other artists. I would like to see a mentoring group that connects professional artists with those who want to try out their wings in the art world. We all can use help as we enter a new arena and there is a wealth of experience among our membership.

Continued on page 2.



*from the President continued from page 1.*

MnWS offers many ways to grow in our work. For those just starting, we can show in the member's open show, check out books from our library and attend demos or workshops. More advanced members can interact with nationally known artists through our workshop schedule, give demos to share some of their expertise and show in our spring juried exhibition. Having just taken part in the Ted Minchin workshop, one of our two yearly workshops, I found it to be a great way to expand my vision. He is an abstract painter and I am a realistic painter, but the workshop really encouraged me to look at my work in a different way. It was a challenge and a struggle, but well worth the effort.

I encourage all of our members to become involved, whether through general meetings, workshops or shows. If you have ideas about what you would like to see the society doing, please feel free to contact me or any of the other board members. We welcome input from our members regarding programming. We have a lot of very enthusiastic members waiting to meet you, so become involved. I also want to thank Dan Wiemer for his hard work these past two years as president. He has been a lot of fun to work with and will be a hard act to follow!

I look forward to meeting all of you at our monthly meetings and upcoming shows.

*Catherine Hearding*

### Minnesota State Fair 97th Annual Fine Arts Exhibition Winners

Congratulations to the following MnWS members.



*"La Cebra" by Terry Genesen Becker*

1st – Kristine Fretheim,  
Maple Grove (Watercolor)

3rd – John T. Salminen,  
Duluth (Watercolor)

Honorable Mention –  
Terry Genesen Becker,  
Minneapolis  
(Transparent Watercolor)

Honorable Mention –  
Mary L. Young,  
Minneapolis (Pen & Ink)



#### BOARD OF DIRECTORS

**President** Catherine Hearding, 651-777-8158  
cathy@chearding.com

**Vice President** CeCeille Hartleib, 651-647-6078  
ceceille\_hartleib@msn.com

**Secretary** Steve Brumbaugh, 612-226-3854  
brumbaugh\_steve@yahoo.com

**Treasurer** Dianne Jandt, 952-891-2375  
artistjandt@aol.com

**Exhibition, Fall** Sonja Hutchinson, 952-471-0098  
sonjahutchinson@mchsi.com

**Exhibition, Spring** Deb Chapin, 952-890-8684  
debchapin@hotmail.com

**Hospitality** Open

**Librarian** Mary Brainard, 952-894-3578  
brainard@q.com

**Newsletter** Therésa Weseman, 952-200-8592  
tweseman@earthlink.net

**Membership** Marian Alstad, 612-824-6460  
mardi4011@aol.com

**Program** Kathleen Sovell, 612-374-3195  
jksovell@comcast.net

**Publicity** John O'Leary, 952-888-0638  
OLryJhn@aol.com

**Workshop** Fred Dinger, 952-890-3122  
fredtingler@gmail.com  
Susan Zinschlag, 651-437-9327  
s.m.zinschlag@att.net

Dianne Jandt, 952-891-2375  
artistjandt@aol.com  
**Northstar Liason** Emmy White, 612-825-8312  
ewhite1@comcast.net

#### PAST PRESIDENTS

2006-08 Dan Wiemer 1994-96 MarySue Krueger

2004-06 Andrew Evansen 1992-94 Carol Gray

2002-04 Sandra Muzzy 1990-92 Gwen Leopaldt

2000-02 Keith Donaldson 1988-90 Harry Heim

1998-00 David Rickert 1986-88 Sally Burns

1996-98 Jan Fabian Wallake 1983-86 Jeanne Emrich

#### BRUSHSTROKES

**Editor** Therésa Weseman, 952-200-8592

**Advertising Mgr** Mary Hanson, 952-476-6896

**Mailings** Beverly Peterson, 763-533-7757

#### HOW TO REACH US:

INFORMATION – VOICE MAIL LINE, 952-996-9228

WEB SITE: [www.minnesotawatercolors.com](http://www.minnesotawatercolors.com)

#### BrushStrokes Newsletter

BrushStrokes is published monthly, September through June. Deadlines are the 15th of the month. Send letters to the editor and art related stories that help inform or educate members to:

#### MnWS BrushStrokes Editor

10910 Quebec Ave. S., Bloomington, MN 55438  
tweseman@earthlink.net

#### Advertising Placement

For ad rates or to place advertising, contact  
Mary Hanson, 952-476-6896

Color printing of BrushStrokes is made possible by a general contribution from Engineering Repo Systems.

### MEMBER happenings

Send member news to: BrushStrokes, 10910 Quebec Ave. S., Bloomington, MN 55438 or email [tweseman@earthlink.net](mailto:tweseman@earthlink.net). Images are welcome and will be used as space permits.

- Kathy Braud's painting Hearts on Fire received People's Choice 2008 in the St. Cloud State University Summer Juried Art Show.



*"Hearts on Fire"  
by Kathy Braud*

- Kathy Braud's themed chair "Main Street" by Sinclair Lewis was one of 52 art chairs created by local artists to help raise money to buy books for the new St. Cloud Public Library.
- Lana L. Grow's painting Owen's Circle of Insight was accepted in the San Diego International Watercolor Show. It was awarded the Golden Merchandise Award.
- Mark Granlund would like to increase his interaction with people who are interested in the arts, so people will now be able to post comments on his blog. <http://artist-insearchofbeauty.blogspot.com>

The **MAHL BRIDGE**  
by Watermen Art, Inc.

**YOUR PAINTING  
WILL IMPROVE!**

- Solid hand support
- Height adjustable
- Holds templates and reference photos
- Available in 3', 4', 6', 7' lengths
- As Seen on TV

**Attaches to canvas**  
(clamps sold separately)

**FREE SHIPPING!**  
(while supplies last)

**Now \$59.99**  
4' Length Orig. \$99.99

See the video at  
**[www.MahlBridge.com](http://www.MahlBridge.com)**

### exhibits

- **"Capturing Nature's Beauty: Two Artists Inspired by the Arboretum"**

Carol (aka: Gray) McIntyre & Karen Knutson will be exhibiting at the Minnesota Landscape Arboretum, Reedy Gallery, 3675 Arboretum Drive, Chaska, MN 55318, Oct. 29, 2008 - Jan. 4, 2009. Opening Reception is Sunday, Nov. 2, 2-4 p.m. Two artists begin with the same inspiration, follow their creative muses along different paths and present contrasting views. (See Workshop Listings for their class/gallery talk offerings during this exhibition.)



*"Iris Lady"  
by Carol McIntyre*

- Lamese McDowell will be exhibiting nine paintings with **"Partners In Art"** – a celebration of visual arts in our community – at the Executive Offices of the Ridgedale Mall, Wayzata, from Sept. 17 - Nov. 17, [www.ridgedalecenter.com](http://www.ridgedalecenter.com). The Ridgedale exhibition is done in partnership with Minnetonka Center for the Arts [www.minnetonkaarts.org](http://www.minnetonkaarts.org); 952-473-7361. Viewing is open to the public.
- Barbara Duffy, Wendy Westlake and Lamese McDowell will be participating in the **Minnetonka Holiday Sale**, Nov. 20 - Dec. 23, at the Minnetonka Center for the Arts [www.minnetonkaarts.org](http://www.minnetonkaarts.org); 952-473-7361. Opening Reception Nov. 20, 6-9 p.m.
- **Episcopal Homes' Art Affair 2008**, Oct. 3-5 This is a fundraiser for Episcopal Homes located at 1840 Univesrity Avenue (the corner of University Avenue and Fairview) in Saint Paul, MN. Many artists are involved in this event and art work is displayed in the lobby and hallways at the facility. Public can view the artwork on Oct. 4 from 10 a.m. - 5 p.m. and on Oct. 5 from 11 a.m. - 5 p.m., [www.ehomesmn.org](http://www.ehomesmn.org)
- Mark Granlund has work on exhibit at **The Grand Hand Gallery** in Saint Paul, MN, located at the corner of Grand Avenue and Dale Street. [www.thegrandhand.com](http://www.thegrandhand.com)



*"Jack in the Pulpit"  
by Mark Granlund*

## Workshops and Classes

**Send workshop listings to:** Workshopper,  
10910 Quebec Ave. S., Bloomington, MN 55438 or email  
tweseman@earthlink.net. Images are welcome and will  
be used as space permits.

### ► Dee Teller Horse Crazy Workshop

October 17-19, 2008,  
Bloomington Art Center,  
\$225 (\$199 Members)  
Call 952-563-8587 for more  
information. Horse Crazy  
artists, come gallop away with  
international artist Dee Teller  
for 3 days of multi-media excitement as you create horses.  
There will be 2 days of collage and 1 day of Asian Brush.



by Dee Teller

### ► Advanced Watercolor Painting

Instructor: Ellen Stinger  
Dates: Fridays, Oct. 24-Nov. 14; 1:30 - 3:30 p.m.; \$43  
Fridays, Nov. 21-Dec. 19; 1:30 - 3:30 p.m.; \$43  
Location: The new Richfield Art Center located in  
Veterans Park on 64th & Portland Ave in the  
building next to the picnic shelter.  
To sign up: Call 612-861-9363

### ► Beyond Beginning Watercolor Painting

Instructor: Ellen Stinger  
Dates: Fridays, Oct. 24-Nov. 21 (no class Nov. 14)  
10:30 a.m. – 12:30 p.m.; \$43  
Location: The new Richfield Art Center located in  
Veterans Park on 64th & Portland Ave in the  
building next to the picnic shelter.  
To sign up: Call 612-861-9363

### ► #1 Aqua Media/ Acrylic and Collage, Experimental and Energizing

Instructor: Lana L. Grow  
Dates: October 20-24, 2008  
Location: Waseca, MN  
To sign up: Call Passion for Art Studios,  
Tammy Jones, 507-835-4183  
tjones@crhands.com  
Intermediate to advanced student & unintimidated beginner

### ► #1 Aqua Media/ Acrylic and Collage, Experimental and Energizing

Instructor: Lana L. Grow  
Dates: November 17-21 2008  
Location: White Bear Center for the Arts,  
White Bear, Minnesota  
To sign up: Danielle Cezanne, 651-407-0597  
danielle@whitebeararts.org,  
Intermediate to advanced student & unintimidated beginner

### ► Florals with a Twist! (Watercolor Collage Workshop)

Instructor: Karen Knutson  
Dates: Thursday-Sunday, Nov. 13-16, 2008  
Times: 9:00 a.m. – 4:00 p.m. each day  
Location: Minnesota Landscape Arboretum  
(Azalea Classroom)  
Cost: \$425 (nonmembers)  
\$375 (members of Edina Art Center  
or Arboretum)

To sign up: Call 952-443-1422

Students will first paint a floral watercolor in the traditional  
manner, learning techniques that make it fun and easy.  
They will learn to create a unique design, build color, and  
incorporate collage to enhance texture. Later, students will  
give that same subject a semi-abstract twist. (Intermediate  
or advanced skill level.)

To see Karen's paintings, check out her website:  
[www.karenknutson.com](http://www.karenknutson.com)

### ► How Does an Artist Solve the Landscape Puzzle? (Lecture, Gallery Walk & Demo)

Instructor: Carol (aka: Gray) McIntyre  
Date: Friday, Oct. 31  
Time: 9 a.m. – 12 p.m.  
Location: MN Landscape Arboretum.  
Cost: \$20 (non-members)  
\$15 (MLA or Edina Art Center members).  
To sign up: Call 952-443-1422

In conjunction with her exhibition at the MN Arboretum  
Carol will show & describe her creative process, her  
internal musings & her artistic decision making while  
completing her landscape paintings. We will walk through  
the exhibition and a palette knife demo will also take place.  
(Open to all adults interested in the artistic process.)

### ► Solving the Landscape Puzzle!

Instructor: Carol (aka: Gray) McIntyre  
Dates: Friday, Oct. 31 & Saturday Nov. 1  
Time: Friday 1 – 4 p.m., & Saturday 9 a.m. – 4 p.m.  
Location: MN Landscape Arboretum.  
Cost: \$175 (non-members)  
\$150 (MLA or EAC members)  
To sign up: Call 952-443-1422

How do you break a landscape into paintable shapes?  
Building on the morning session, and with her wit &  
passion, Carol will guide you to learn how to “see”  
the larger shapes that create depth, design & feeling  
in a painting. Students will solve several of their own  
“landscape puzzles” from which to develop successful  
paintings. (Open to the intermediate & above working in  
any media or style. Fri. morning session required.)

*Continued on page 4.*



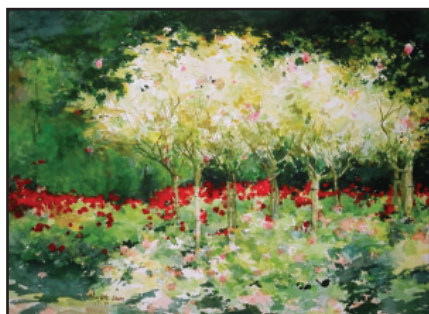
**Workshops and Classes** *continued from page 3.*

► **Watercolor: Pour It On**, Jan Fabian Wallake meets once a month to instruct a three-hour watercolor class in Rosedale. Learn a new technique and complete a small painting every month. Call Wallake Studios at 651-351-1301 for information.

► **Oaxaca Art Adventure** with Andy Evansen. Join Andy on an Art Adventure to one of the most beautiful mountain cities in Mexico. The plein air outing will happen February 18-25, 2009. Contact Earl Olson for information at 715-248-7630 or eolson1@frontiernet.net.

► **Paint in Giverny, France!** June 12-June 19, 2009

Watercolor Artist Charlotte Laxen returns to Artstudy Giverny for June watercolor painting. Poppies, Peonies and Roses await watercolor painters of all levels. Enjoy the pleasure of daily watercolor painting in Monet's



*"Rose Trees and Geraniums"*  
by Charlotte Laxen

garden and in the glorious surrounding Normandy countryside, as well as in Monet's beloved village of Giverny. Enrollment limited to 10 participants. Charlotte has a heart for painting France and can't wait to share this special place with you. For further information and to register for this experience of a lifetime, contact Charlotte at claxen@tds.net. Early enrollment special through Oct. 15, 2008 [www.charlottelaxen.com](http://www.charlottelaxen.com), [www.artstudy.com](http://www.artstudy.com)

**MnWS NEW MEMBERS**

Mary Axelson  
Marilyn Burns  
Tammy Kennen

Janice Morris  
Jennifer Stone  
Gail Speckman

We have 346 paid members.

*(Check the label on your newsletter  
to see when your membership dues are due.)*

**Northstar Meetings**

*Held at The Roseville Oval at Roseville Skating Center,  
2661 Civic Center Dr. Directions from MPLS, take  
Hwy. 280 to Hwy 36 and East to Snelling North Exit,  
turn right on County Road C, drive past Hamlin Ave. and  
left into Civic Center Drive before Lexington Ave.*

**Upcoming Meeting & Demo: Oct. 16**

Demo by Tom Francesconi, \$10 (\$5 Northstar Members)

**Upcoming Fall Workshop:**

Love Transparent watercolor? Learn from a master!  
"Painting with a Purpose" with Tom Francesconi

Date & Time: Oct. 13 - 17, 9 a.m. - 4 p.m.

Cost: \$350 (Member) & \$375 (Nonmember)

Location: Presbyterian Church of the Way, 3382 N.  
Lexington Ave., Shoreview, MN

For more information or to register call Georgiana  
Ruzich 763-424-5164 or Joe Greenwald 651-633-7593.

To view Francesconi's work check out his website:  
[www.tomfrancesconi.com](http://www.tomfrancesconi.com).

**Fall Watercolor at the Art Center****DRAWING TO WATERCOLOR**

**Instructor: Melodee Strong**

**Skill Level: All**

Watercolor is often regarded as a painting medium, but in this class we will explore watercolor as a drawing tool and how to incorporate it with other drawing techniques, using watercolor pencil and graphite pencil. Drawing fundamentals will be reviewed as well as color theory concepts with various in-class assignments using still life, figure drawing, and landscape.

**Enrollment limited to 16**

**Ages 18 and up**

**B450**

**Fridays, Oct. 31 - Dec. 19**

**(8 sessions) 9:30 AM - 12:30 PM**

**\$173 Members / \$192 Non-members**

**\$20 Materials Fee**

**Minnetonka Center for the Arts**

Need to know more? Call for a catalog or go to our web site.  
952.473.7361, ext. 16 • [minnetonkaARTS.org/classes](http://minnetonkaARTS.org/classes)

**2240 North Shore Drive • Wayzata, MN 55391**  
**952.473.7361, ext. 16**