

MnWS calendar

Programs are held the second Thursday of the month at 7:00 p.m.

Mar. 12 Karlyn Holman will be demonstrating in place of Ellen Jean Diederich

Apr. 2 Spring Show

May 14 Nels Femrite

Location: Christ Presbyterian Church, 6901 Normandale Blvd., Edina, MN (Corner of 70th St. S. and Hwy 100)

MEMBERSHIP APPLICATION

Mail your application and check payable to Minnesota Watercolor Society to:

Carol Wingard, Membership Chair
10427 Fawns Way
Eden Prairie, MN 55347

MnWS Membership Dues:

- ☐ Single \$30
- ☐ Couple/Family: \$40
- ☐ Seniors (65+) \$25

Name _____

Address _____

City _____

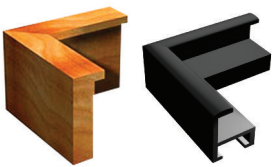
State, Zip _____

Telephone _____

Email _____

☐ Check here to have your name removed from the list sent to our exhibition award donors who mail product information to our members.

Metroframe.com
classic exhibition frames wholesale



Complete
framing advice
on the web.

952-941-6649
www.metroframe.com

Wet Paint inc.
Artists' Materials & Framing
1684 Grand Avenue Saint Paul
651.698.6431 info@wetpaintart.com
www.wetpaintart.com
Your most complete local source for
watercolors & mediums, brushes,
watercolor papers, pads & blocks

— MnWS Mission Statement —
"To further development
of the watercolor artist
by providing a
supportive environment
with education and exhibition
opportunities, and to promote
public appreciation and greater
visibility of the art."

4011 Chicago Avenue South, Minneapolis, MN 55407-3142



Volume 30, Number 3

March 2009

March Guest Speaker Karlyn Holman

Karlyn Holman will do a combination of mixing abstraction with realism, traditional with non-tradition, and acrylic with watercolor. "When you take the elements of realism and add exciting color and texture, maybe a little collage and watercolor crayons, you have a great formula for a fun and free expression," says Karlyn Holman. Karlyn is planning an evening of fun ideas, not anything too serious. A lot of these ideas are in her new book titled "Watercolor, Whatever Works".



paintings by Karlyn Holman

SAVE THE DATE Members' Day, Saturday, June 13

Get inspired for a summer of painting. Plan to join your MnWS friends for Members' Day 2009 at Fish Lake Regional Park Pavilion, located just west of 494 off Bass Lake Road in Maple Grove. We'll start off with two morning demos inside the enclosed pavilion. After a catered box lunch, we'll move outside for two plein air demos, followed by painting time on the grounds. Later in the afternoon, we'll reconvene at the pavilion for an informal critique of our paintings.

Look for the registration form for Members' Day in this issue of Brushstrokes. Watch for our schedule of demo artists in the April newsletter. Get more information at MnWS monthly meetings and please consider volunteering to help make Members' Day a success.

Questions?

Contact Catherine Hearing at 651-777-8158, cathy@chearding.com, or MarySue Krueger at 612-716-4829, wurtzzel@aol.com.

from the President



As I write this column, February is halfway over and it is only a month until Spring arrives. The painting possibilities are tantalizing! I can already envision some of my favorite subjects and what I might do with them. This brings me to the inspiring and beautiful slide show and talk given by Fred Somers, at our February meeting last week. His message was to be a voice, not an echo, with our painting; to say something from our own experience and perspective. It is valuable advice.

Each of us has something unique to say and the path to that particular voice is through painting what we know and love. It is very evident in Fred's work. He lives in Northfield and paints the forests, streams and wildflowers of southern Minnesota so beautifully. He moves from reality to abstraction and back, using principles of color and design. If we continue to paint what we know and love, we will start experimenting and trying out some different forms of expression. This will move our art into new areas and we will become that unique voice and not just a copy of someone else's work. If you set five different artists up in one location, the results will be five different visions of the same subject, each with a style unique to the artist. It is fascinating how we each see something colored by our own experience, and focus in on different aspects. This shows that we each have a unique voice.

We will be able to see this in action when we attend our Members' Day Event, which is being planned for June 13, 2009 at Fish Lake Park in Maple Grove. We are planning to focus part of the day on plein-air painting and members will have some time in the afternoon to try their hand at painting on location. I'm sure that there will be many different representations of the park. It is a lovely area with a very nice pavilion. We are planning on having four demo artists for the day, with two being plein-air artists who will first do demos and then help members as they work plein-air. We will return to the pavilion for a critique session at the end of the day. This should be a great way to start off our summer and get excited about painting outside once again. Be sure to register early to guarantee a spot. Registration forms are available in the newsletter or on the Web site. I'm looking forward to a very fun event!

Bullet points from the February MnWS Board Meeting

- Member's Day at Fish Lake Park - June 13, 2009
- Deb Chaplin is seeking someone to review the digital entries to see if they meet the criteria.
- Silverwood Park Gallery in New Brighton will be opening in late 2009 and would be interested in hosting shows for us in the future.
- The board has agreed to raise the entry fee for shows to \$18 - \$20.
- For the newsletter, we would like to have other members submit articles rather than just the President.
- Three more members this month bringing the total to 363.
- Ellen Diederich had to cancel her demo and workshop due to illness.
- Looking to expand our list of venues to increase publicity about our shows.



BOARD OF DIRECTORS

President Catherine Hearing, 651-777-8158
cathy@chearding.com

Vice President CeCeile Hartleib, 651-647-6078
ceceile_hartleib@msn.com

Secretary Steve Brumbaugh, 612-226-3854
brumbaugh_steve@yahoo.com

Treasurer Dianne Jandt, 952-891-2375
artistjandt@aol.com

Exhibition, Fall Sonja Hutchinson, 952-471-0098
sonjahutchinson@mchsi.com

Exhibition, Spring Deb Magelssen, 651-464-5326
debmagelssen@yahoo.com

Hospitality Ruth Hoglund, 612-866-9741

Librarian Mary Brainard, 952-894-3578
brainard@q.com

Newsletter Therésa Weseman, 952-200-8592
tweseman@earthlink.net

Membership Carol Wingard, 952-942-7019
cjwin48@hotmail.com

Program Georgia Kandiko, 952-445-3406
jgkandiko@msn.com

Publicity Kathleen Riopelle, 612-869-0352
kkriopelle@att.net

Workshop Kathleen Sovell, 612-374-3195
jksovell@comcast.net
Susan Zinschlag, 651-437-9327
s.m.zinschlag@att.net

Dianne Jandt, 952-891-2375
artistjandt@aol.com

Northstar Liaison Emmy White, 612-825-8312
ewhite1@comcast.net

PAST PRESIDENTS

2006-08 Dan Wiemer **1994-96** MarySue Krueger

2004-06 Andrew Evansen **1992-94** Carol Gray

2002-04 Sandra Muzzy **1990-92** Gwen Leopaldt

2000-02 Keith Donaldson **1988-90** Harry Heim

1998-00 David Rickert **1986-88** Sally Burns

1996-98 Jan Fabian Wallake **1983-86** Jeanne Emrich

BRUSHSTROKES

Editor Therésa Weseman, 952-200-8592

Advertising Mgr Mary Hanson, 952-476-6896

Mailings Beverly Peterson, 763-533-7757

HOW TO REACH US:

INFORMATION – VOICE MAIL LINE, 952-996-9228

WEB SITE: www.minnesotawatercolors.com

BrushStrokes Newsletter

BrushStrokes is published monthly, September through June. Deadlines are the 15th of the month. Send letters to the editor and art related stories that help inform or educate members to:

MnWS BrushStrokes Editor

10910 Quebec Ave. S., Bloomington, MN 55438
tweseman@earthlink.net

Advertising Placement

For ad rates or to place advertising, contact
Mary Hanson, 952-476-6896

Color printing of BrushStrokes is made possible by a general contribution from Engineering Repo Systems.

exhibits

► **Mary Axelson** will have work on display March 1 - 31 at Kincaid's in Bloomington, Minnesota.

► **“Pat Greer – A Retrospective,”** features paintings created by Greer, co-director with Marion Ward from 1977-1986 of Edina Art Center. Exhibit opens Apr. 2 and continues thru Apr. 25 with a reception from 2 - 4 p.m. on Sat., Apr. 25; 4701 W 64th St., Edina; 952-903-5780.

► **“The Long Zoom,”** Sandra Muzzy and Jeanne Long's exhibition of the Arboretum from a distance and close up, runs from Jan. 7 - Mar. 29 at the Macmillan auditorium at the University of Minnesota Landscape Arboretum. www.arboretum.umn.edu/TheLongZoom.aspx

► **CALL FOR ARTISTS: 24th Conservatory Art Classic.** Realistic/Representational art only, please. Entry deadline: June 13, 2009. Show dates September 12-27, 2009. For a Prospectus: SASE to Art Classic, Box 502, Clifton, TX 76634; or e-mail art@bosqueconservatory.com; www.bosqueconservatory.com.

► **“7th Annual Spring Garden Show and Sale”** April 30 - May 28; Edina Art Center Faculty & Advanced Students; Opening Reception Date: Thurs., April 30, 5 - 8 p.m.; www.EdinaArtCenter.com

► **Minnetonka Center for the Arts Coming Exhibits**

Photography Show: An Uncommon Landscape
Feb. 26 - Mar. 26.

MnWS 2009 Annual Juried Exhibition

Apr. 2 - 30. Opening reception Apr. 2, 6 - 8 p.m. The show will include between 80 - 100 pre-juried pieces that represent the best watercolor artists in the state.

Gallery Hours: Mon., Fri. and Sat.: 9 a.m. - 5 p.m.
Tue., Wed. and Thur.: 9 a.m. - 8 p.m.
Closed Sundays

Minnetonka Center for the Arts,
www.minnetonkaARTS.org

Northstar Meetings

Held at The Roseville Oval at Roseville Skating Center, 2661 Civic Center Dr. Directions from MPLS, take Hwy. 280 to Hwy 36 and East to Snelling North Exit, turn right on County Road C, drive past Hamline Ave. and left into Civic Center Drive before Lexington Ave.

Upcoming Meeting & Demo: Mar. 19, Ellen Roles

Art On A Line: May 14 - 16

Fine Arts Building on the State Fair Grounds

www.northstarwatercolorssociety.com/artoneline.html

Upcoming Spring Workshops:

Pat Undis, March 14 - 15

Carrie Burns Brown, April 20-24

Registration forms can be obtained on

www.northstarwatercolorssociety.com. or by contacting Georgiana Ruzich at 763-424-5164

MEMBER happenings

Send member news to: BrushStrokes, 10910 Quebec Ave. S., Bloomington, MN 55438 or email tweseman@earthlink.net. Images are welcome and will be used as space permits.

► Terry Genesen Becker received an Award of Merit at Fourteenth Annual National Arts in Harmony 2009 Juried Art Exhibition. The show continues to March 27 at the Sherburne County Government Center.

► Karen Knutson's painting, “Point of View” was accepted into the Missouri Watercolor Society 2009 Exhibition. Karen also received “Best Watercolor Award” at the Elk River Area Alliance Association Exhibition for her painting, “Rhythm of Life”. This show will be open till March 27, 2009.



“Rhythm of Life,” by Karen Knutson

Online Newsletter?

The Minnesota Watercolor Society Board is considering providing the option for members to review the monthly newsletter online as posted on the Minnesota Watercolor Society Web site rather than receiving the newsletter in the mail. There are a number of reasons we are considering this as an option:

- Reduction of costs by reducing or eliminating printing of the newsletter, labels for addressing the newsletter and postage.
- Going “Green” and becoming “Eco Friendly” by reducing paper usage.

We will want to obtain feedback from you, the association members before we move ahead with this option. A very short survey will be passed around during the March meeting to get a better idea of your interest. If the survey results are positive to move forward, we will include the option for you to choose the form you want to receive the newsletter with the May membership renewal process.

Thank you so much for considering this option,
Carol Wingard, Membership Chairperson

Minnesota Watercolor Workshops

March 14 & 15 (Sat & Sun)

Rick Kochenash www.rkochenash.com

Cultivating a Refined Brush

Cost \$95

MNWS is so fortunate to have Rick Kochenash teach a 2 day workshop for us. In these 2 days, students will develop a discerning eye to see flowers' subtle color changes, review the process of seeing color correctly and the "how" of mixing the colors you see. Then we will quickly move on to painting graceful flowers, utilizing Rick's special techniques that produce winning florals.



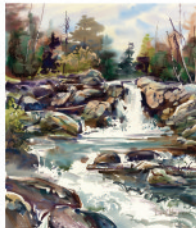
April 6 - 9, 2009 (Monday - Thursday)

Dan Wiemer, MNWS www.danwiemer.com

Building a Better Painting

Cost \$315 Members \$345 (Nonmembers)

Good painters are first good designers. Learn concepts that allow you to find strong abstract shapes in your scenes. We will learn about the different types of contrasts and how they add drama to your painting. Composition will be explored and used to lead the viewer's eye through a more interesting painting. Simplifying a scene can be one of the greatest challenges that face an artist; we will explore distilling a scene and becoming better artists through the process. Hopefully this will be an energizing and different way to approach your next subject. This will be a fun four days of learning and sharing with other artists. "There is no roadmap to making better art... hopefully we can get lost, find a new route and smile along the way." (Maybe even laugh a little!)



October 5-9 (Mon - Fri)

Myna Wacknov www.mynawacknov.com

Wacky portraits - Many Possibilities From One Image

Cost \$395 Members \$435 (Nonmembers)

This workshop is for those people who wish to move away from strict interpretation of a photograph and explore the potential for more unique and creative alternatives. People don't need to be particularly good at portraits to take this workshop. You will learn ideas for designing, not how to get a good likeness. Everyone will be working with the same image, provided by the instructor, to maximize the number of variations produced in the time frame of the workshop. We will be working with a portrait image, but the principle learned in the workshop will work with any subject matter. Each day will explore a different element of design and how it could apply to the image at hand. BE PREPARED FOR FUN, CREATIVE EXCITEMENT AND A FAST PACED AND HIGHLY STRUCTURED ENVIRONMENT.



Workshop Registration

I would like to register for the following workshop(s)

- ☐ **Rick Kochenash/Cultivate a refined Brush**
March 14 & 15 (Sat & Sun) \$95
Location: Hopkins Center for the Arts
- ☐ **Dan Wiemer/Building a Better Painting** \$315
April 6 - 9 (Mon - Thu). . (Nonmembers) \$345
Location: Bloomington Art Center
- ☐ **Myna Wacknov/Wacky Portraits - Many Possibilities from One Image** \$395
October 5 - 9 (Mon-Fri). (Nonmembers) \$435
Location: Bloomington Art Center

For detailed information about the artist or workshop visit our Web site at: www.minnesotawatercolors.com

For inquiries contact:

Kathleen Sovell, Workshop Chairperson
Phone: 612-374-3195
E-mail: JKSOVELL@comcast.net

Name _____

Address _____

City _____ State _____ Zip _____

Phone _____

E-Mail _____ @ _____
MNWS does not share e-mail addresses with others.

Please send \$125 deposit or fee for each workshop. Cancellations in writing must be received no later than two weeks prior to workshop to qualify for a full refund. If the workshop is cancelled, money will be promptly refunded.

Amount Enclosed: \$ _____

Make checks payable to Minnesota Watercolor Society and mail with form to:

Workshops
Susan Zinschlag
2353 Glacier Way
Hastings, MN 55033-3757
Phone: (651-437-9327)
E-mail: s.m.zinschlag@att.net

"What is the Mini Show?"

I have been asked "What is the Mini Show?" "When is it?" by new members or even some who have not been attending the meetings regularly. We have been having Mini Shows at our meetings for a few years. The idea is that artists are encouraged to bring a piece or two of their artwork along with them to get feedback from other members. It needn't be framed. Most members bring something that they are working on.

We ask a member who teaches to critique one of the pieces. Artists who would like a critique put a post-it note on their painting(s). All who bring a piece for the Mini Show are asked to put their names into an envelope for a drawing. We have a theme for the meeting which you don't have to adhere to. It's usually something catchy (maybe trite? or a little silly?) But you can bring anything you would like. It will be very appreciated. You may even get your name drawn for the small gift item.

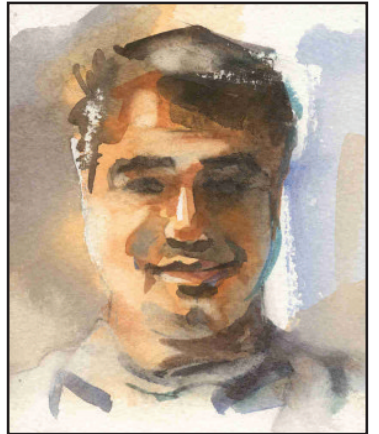
The winner of February's drawing for the Mini Show was Doug Meythaler.

For the March 12th meeting the Mini Show theme will be, "Landscapes, Still Lifes, or Shamrocks for St. Paddy's Day."

We will not have a Mini Show in April because of the Spring Exhibition opening taking the place of the meeting for that month.

For our May 14th meeting plan on bringing a self- portrait! Yes, start working now! It will really be fun if a lot of our members do a self portrait and bring it to this meeting. If you paint abstract, do an abstracted version or something that represents you. Do whatever you would like - just so it is YOU!

Thank you, CeCeile Hartleib



"Self Portrait," by Dan Wiemer

Workshops and Classes - Advertising Policy Change

The MNWS Board of directors has implemented a new policy regarding advertising of member classes and workshops in the newsletter. We have been getting a very large number of member listings for classes and workshops, to the extent that it is impacting the scope of the newsletter. To get all of these listings included takes away space for articles and other announcements and also adds significantly to the cost. Members have indicated that they would like to see more articles and fewer listings in the newsletter. The board has decided to remove the workshop and classes page from the printed newsletter and to include all of these listings, free of charge, on our Web site. We will have a paragraph in future newsletters directing people to the Web site for the workshop/classes listings. To include your listings on the Web site page, please e-mail information to webmaster@minnesotawatercolors.com. If you have any questions or concerns, please contact Catherine Hearing at 651-777-8158 or by e-mail at cathy@chearding.com.

Artist of MN Spring Show - May 16 and 17, 2009

There's an art group that many of you need to find out about. I've been a member of Artists of Minnesota for 24 years now. They have a Spring Show on May 16 and 17th. I call it a convention, in that it is a 2 day event, and there are lots of demonstrations, an exhibit, and an awards dinner. Lots of awards, and lots of fun! This group encourages artists, whether you are beginning, intermediate, or advanced, with awards in all categories. This year, it is being held in Bemidji, Minnesota. Grab an art friend, and make the trip to join us. For more information and a prospectus the Web site is www.artistsofminnesota.org.

The Spring Show will be held at the Hampton Inn located on Lake Bemidji, and is hosted by the Northern Artists and Gallery North. Pat Shough, Chair of the event, recommends making reservations as soon as possible because Bemidji's college graduation is scheduled for that same weekend. (The Inn should be full with extra people to see our show!)

Hope to see you there!
Karen Knutson

Minnesota Watercolor Society Members' Day

Saturday, June 13, 2009

RAIN or SHINE – Fish Lake Regional Park Enclosed Pavilion

14900 Bass Lake Road, Maple Grove MN 55311

9:00 AM – 5:00 PM

REGISTRATION FORM

Please fill in the information requested and return the completed form with a check made out to MNWS Members' Day for the total amount.

Mail to: MarySue Krueger
18321 Tristram Way
Eden Prairie MN 55346

Registration forms must be received by Thursday, June 4, 2009.

Directions: From I - 494, take Bass Lake Road (County Road 10) west 1 mile to the park entrance. Pavilion is about ¾ mile into the park.
Maps available at www.threeriversparkdistrict.org

Questions? Contact Catherine Hearing at 651-777-8158, cathy@chearding.com
or
MarySue Krueger at 612-716-4829, wurtzzel@aol.com

Cut here

Name _____ Phone _____ - _____ - _____
Address _____
City _____ State _____ ZIP _____
Email _____

Registration fee \$25.00

Box lunches are available for \$9.00. Sandwiches are on Hoagy buns. All choices include fruit, side salad and dessert. Beverages will be provided. Please select from the choices below.

- ☐ Turkey
- ☐ Egg Salad
- ☐ Roast Beef
- ☐ Veggie Wrap
- ☐ Chicken Salad

☐ I would like to order _____ box lunch(es) at \$9.00 each for a total of.....\$_____._____

Total amount enclosed..... \$_____._____

I volunteer to help with Members' Day:

- ☐ Check-in
- ☐ Artists' assistants (4 needed)
- ☐ Refreshments and lunch
- ☐ Cleanup

MnWS NEW MEMBERS

Jeanne Bourquin
Rose Rasmussen
Robert Taylor

We have 363 paid members.
*(Check the label on your newsletter
to see when your membership dues are due.)*

A Special Thank You From
The Workshop Committee

A few weeks ago Ellen Jean Diederich called to cancel her April 6-9th workshop with us because of a medical problem. Who do you call when you need help?? No, not “Ghost Busters.” Kathleen was on vacation, so Karen got on the phone and checked with several people. She found a hero who said “Sure I can do it!” Actually Dan Wiemer is always ready to help in whatever way he can. The workshop committee wants to thank Dan for stepping in at almost the last minute to do a 4 day workshop. Our hero!



Photo courtesy of Jack O'Leary

Sandra Muzzy and Jeanne Long officially opened their exhibition, The Long Zoom, at the Minnesota Landscape Arboretum's Reedy Gallery with a lively demo on nature journaling. They had the crowd of over 100 laughing and participating in a presentation on how to overcome the pressures of the blank piece of paper. The Exhibition of 50 paintings, along with journals and artifacts, continues through March 29. Come out and walk the three mile drive, witness all of the beauty of nature in late winter, and then grab something warm in the restaurant to enjoy while sitting in front of the fire in the spacious dining room, watching the winter birds, and planning your spring garden. With all of the wild and artfully arranged beauty of the Arboretum, you may just be inspired to tackle that blank sheet of paper!

A Social Painter

Many of my artist friends have heard me say, “I’m a Social Painter,” and I thought I would just write down a few thoughts about that realization. It’s curious that I find I am most productive if I pack up my stuff, pour it all into the trunk of the car and set off for a destination. Of course, in the “good “ weather, I meet artists out and about and that is pure happiness. Sometimes a friend has found a spot that looks to me like a swamp but to her is a gem of beauty. I just look around and find something else to paint, usually a structure of some kind. Then I ask myself “what is it all about?” I guess I like the adventure of it all and I don’t want to get too SERIOUS about it all. I paint with three artist friends every Tuesday. We really look at each other’s paintings. We look really hard, and make suggestions. I’ve grown to trust these artists and their comments. When they say “STOP,” sometimes I do. Now I’m starting to trust my own directions and corrections. I also paint with a group at a church in Roseville on Wednesday mornings. The group is totally open and sometimes it is small and sometimes large. It is amazing how quiet it all gets in there with everyone doing their own thing, but the energy of creativity is all around and I love it. Emmy White



Board Announcements

Steve Brumbaugh will be stepping down in May from the Secretary position and Dianne Jandt has volunteered for that position. The Board will present the nominee at the March general meeting for a vote.

A nominee for treasurer is open. Please contact Catherine Hearing if you are interested in this board position.

Ruth Hoglund is looking for a replacement for hospitality director. Now that volunteers have signed up to bring treats for each monthly meeting, all that’s left is to get the coffee started and to bring supplies (cups, plates, etc.) Please contact Ruth if you are interested.