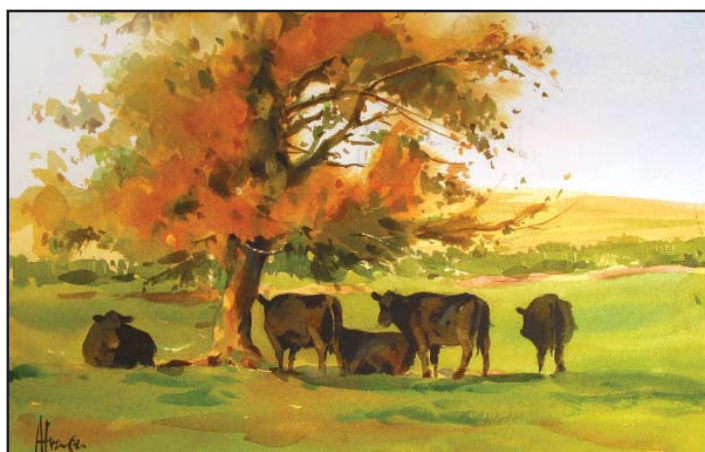
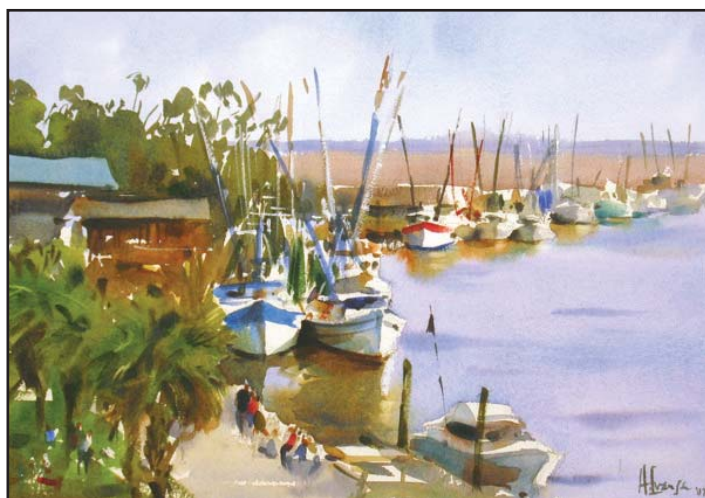


## Watch Andy Evansen demonstrate landscape painting

Andy Evansen will be demonstrating landscape painting at the September 10 meeting. Andy tries to finish a painting in as few washes as possible, so there's a good chance members will be able to see a painting from start to finish that evening. He begins by working fairly loosely, wet in wet, for lighter values, then once the paper has had some time to dry, he paints in the large middle value shapes, connecting as much as he can. Andy is always trying to lose edges in these early stages to create an Impressionistic feeling, and define shapes with darks and shadows toward the end. Values and composition will be stressed, and he'll also talk about the initial drawing, which he feels is very important.



*All paintings on the cover by Andy Evansen*

**from the President**

I hope that you all had a pleasant and productive summer. I know mine was far too short! I go into summer with thoughts of many things to do and experiment with, and come out the other side with too few accomplished. But I never get bored!

We will be meeting regularly once again in a few short weeks and I know that there are many exciting things to look forward to. There is still time to sign up for the Myrna Wacknov workshop in October. Our fall member's show will be here shortly at the Bloomington Art Center, Andy Evansen will be giving our September demo and many more exciting things to come.

Last spring we sent out a survey to our members regarding our newsletter. We had a decent response and of those who responded, 74% wished to keep the newsletter as we now have it, in print form. We found out that you really like your newsletter! We received some interesting suggestions for things to add to it and constructive comments to improve it. Thank you to those who took the time to fill out the survey. The results of the survey may be found on our website.

This summer we received a substantial price increase on the printing cost of our newsletter. We have been receiving a very favorable price, but due to difficult economic times, the printer needed to charge us more. The result was a price that we cannot afford. So, we have been putting together some ideas that will help to keep our costs under control and still provide you with an informative and visually pleasing newsletter. The September edition is being printed by a new printer, whose price is more in line with what we can afford. You may notice some differences and we welcome your comments. We are trying them out to see how it works. The board will be meeting to discuss our other options and decide how we will move forward with the newsletter. We will keep you informed of their decision and let you know what to expect. We intend to provide you with a printed color newsletter that will keep you informed and connected with the MnWS.

At the same time, we are using our website as an additional resource for some of the things that you asked for in the newsletter. There were several requests for information on national shows and opportunities for artists. We are posting these on the website as we receive them from organizations. We will also try to get a more comprehensive list assembled as we progress. Please make sure to check the website for this information.

You also asked for more column space on painting tips and techniques and a question/answer column to the Board. As space is available, we will try to include these sorts of columns. If you have questions for the Board, please send them to a Board member or the newsletter editor, and we will try to include them in the next edition. If you have painting tips or techniques that you would like to share, please send them to the editor and she will include them when space is available.

I hope that all of these changes will make MnWS more useful to its membership and help us to achieve our mission. I look forward to sharing another year of exciting opportunities with my fellow watercolor artists.

**BOARD OF DIRECTORS**

<b>President</b>	Catherine Hearding, 651-777-8158 cathy@chearding.com
<b>Vice President</b>	Deb Chapin, 952-890-8684 debchapin@hotmail.com
<b>Secretary</b>	Dianne Jandt, 952-891-2375 artistjandt@aol.com
<b>Treasurer</b>	Georgia Kandiko, 952-445-3406 jgkandiko@msn.com
<b>Exhibition, Fall</b>	Sonja Hutchinson, 952-471-0098 sonjahutchinson@mchsi.com
<b>Exhibition, Spring</b>	Deb Magelssen, 651-464-5326 debmagelssen@yahoo.com
<b>Historian</b>	Marian Alstad, 612-824-6460 mardi4011@aol.com
<b>Hospitality</b>	Phyllis Winther, 952-474-7756 exel3@aol.com
<b>Librarian</b>	Mary Brainard, 952-894-3578 brainard@q.com
<b>Newsletter</b>	Therésa Weseman, 952-200-8592 tweseman@earthlink.net
<b>Membership</b>	Carol Wingard, 952-942-7019 cjwin48@hotmail.com
<b>Program</b>	Judy Haeny, 612-866-3670
<b>Publicity</b>	Kathleen Riopelle, 612-869-0352 kkriopelle@att.net
<b>Workshop</b>	Kathleen Sovell, 612-374-3195 jksovell@comcast.net Susan Zinschlag, 651-437-9327 s.m.zinschlag@att.net Dianne Jandt, 952-891-2375 artistjandt@aol.com
<b>Northstar Liaison</b>	Marilyn Jacobson gjake@comcast.net

**PAST PRESIDENTS**

<b>2006-08</b> Dan Wiemer	<b>1994-96</b> MarySue Krueger
<b>2004-06</b> Andrew Evansen	<b>1992-94</b> Carol Gray
<b>2002-04</b> Sandra Muzzy	<b>1990-92</b> Gwen Leopaldt
<b>2000-02</b> Keith Donaldson	<b>1988-90</b> Harry Heim
<b>1998-00</b> David Rickert	<b>1986-88</b> Sally Burns
<b>1996-98</b> Jan Fabian Wallake	<b>1983-86</b> Jeanne Emrich

**BRUSHSTROKES**

<b>Editor</b>	Therésa Weseman
<b>Mailings</b>	Mary Rubellke
<b>Proofreader</b>	Jeanne Long

**HOW TO REACH US:**

INFORMATION – VOICE MAIL LINE, 952-996-9228  
WEB SITE: [www.minnesotawatercolors.com](http://www.minnesotawatercolors.com)

**BrushStrokes Newsletter**

BrushStrokes is published monthly, September through June. Deadlines are the 15th of the month. Send letters to the editor and art related stories that help inform or educate members to:

**MnWS BrushStrokes Editor**

10910 Quebec Ave. S., Bloomington, MN 55438  
tweseman@earthlink.net

**Advertising Placement**

For ad rates or to place advertising, contact  
Therésa Weseman, tweseman@earthlink.net



# Watercolor Tips...

By Catherine Hearing

With summer in full swing and landscapes in abundance, one of the problems faced by landscape artists is how to handle greens.

## Add to tube greens

There are numerous tube greens available, most of which fall into the category of “un-natural”. They require some addition to make them useful. If you choose a “yellow-green” try an addition of its complement “red-violet” to neutralize and make it more natural looking. Try experimenting with some of the following colors to come up with a wonderful variety of rich greens: permanent green with permanent magenta, sap green with mineral violet or magenta. Try adding different shades of reds to sap green, such as cadmium scarlet and alizarin crimson. Compare all of these different mixtures to find the ones that you like best.

## Mix your own greens

I don't include tube greens on my palette, preferring instead to mix all of my greens. After all, it is cheaper and my colors are more unified because they are all mixed from the same group of colors on my palette. I typically have at least two blues on my palette. For example, I might have cobalt blue (blue-violet) and Prussian blue (blue). The cobalt has a small amount of red in it; the Prussian is close to a pure hue (no red or yellow in it) I can mix these two blues with a yellow, say Winsor lemon (yellow), to get two different greens. Or I can choose another hue, say New Gamboge (yellow-orange), to create slightly more olive greens. To really get to the greens I want, I need to add more red to these mixtures.

## Experiment by adding reds

Natural greens contain a lot of red. Experiment with several different shades of reds to get a wide variety of rich greens: Choose an orange (cadmium scarlet), red-orange (Winsor red) or red (alizarin crimson). I use the cadmium scarlet, Prussian blue, Winsor lemon combination a lot for my dark greens. The cadmium scarlet gives the greens a kind of coppery hue that can be seen in many evergreens.

## Use primary colors

The secret to great natural looking greens is including all three primary colors in the mixture. The next time you are out looking at trees and foliage, challenge yourself to see the red in all of those greens. Experiment with some of these combinations to come up with a variety of color that will make your landscapes come alive.

*If you have tips you'd like to submit to the newsletter e-mail the editor at [tweyman@earthlink.net](mailto:tweyman@earthlink.net) or write her at 10910 Quebec Ave. S., Bloomington, MN 55438.*



Photograph from [www.istockphoto.com](http://www.istockphoto.com)

# Minnesota Watercolor Workshop

October 5-9 (Mon – Fri)

Myrna Wacknov [www.myrnawacknov.com](http://www.myrnawacknov.com)

*Wacky Portraits - Many Possibilities From One Image*

Cost: \$395 Members \$435 Nonmembers



This workshop is for those people who wish to move away from strict interpretation of a photograph and explore the potential for more unique and creative alternatives. People don't need to be particularly good at portraits to take this workshop. You will learn ideas for designing, not how to get a good likeness. Everyone will be working with the same image, provided by the instructor, to maximize the number of variations produced in the time frame of the workshop. We will be working with a portrait image, but the principle learned in the workshop will work with any subject matter. Each day will explore a different element of design and how it could apply to the image at hand.

**Be prepared for fun, creative excitement and a fast paced and highly structured environment.**

## Workshop Registration

I would like to register for the following workshop

- ☐ Myrna Wacknov/Wacky Portraits –  
Many Possibilities from One Image  
members \$395 nonmembers \$435  
October 5 - 9 (Mon-Fri)  
Location: Bloomington Art Center

For detailed information about the artist or workshop visit our website at:  
[www.minnesotawatercolors.com](http://www.minnesotawatercolors.com)

For inquiries contact: Kathleen Sovell, Workshop Chairperson  
Phone: 612-374-3195  
E-mail: [jksovell@comcast.net](mailto:jksovell@comcast.net)

Name \_\_\_\_\_

Address \_\_\_\_\_

City \_\_\_\_\_ State \_\_\_\_\_ Zip \_\_\_\_\_

Phone \_\_\_\_\_

E-Mail \_\_\_\_\_ @ \_\_\_\_\_

(MnWS does not share e-mail addresses with others.)

Please send \$125 deposit.

Cancellations in writing must be received no later than two weeks prior to the workshop to qualify for a full refund. If the workshop is cancelled, money will be promptly refunded.

Amount Enclosed: \$ \_\_\_\_\_

Make checks payable to Minnesota Watercolor Society and mail with form to:

Workshops, Susan Zinschlag  
2353 Glacier Way, Hastings, MN 55033-3757  
Phone: (651-437-9327) E-mail: [s.m.zinschlag@att.net](mailto:s.m.zinschlag@att.net)

## MnWS workshops scheduled for 2010

Andy Evansen, March 6 & 7

Charlotte Huntley, May 10 - 14

*Watch future newsletters for details.*



## WATERCOLOR PAINT, BRUSH, AND PAPER SALE!

**SAVE UP TO 40%**

Winsor & Newton	Dr. Ph. Martin's Hydrus
M. Graham	Robert Simmons
Da Vinci	Escoda
Talens	Princeton
Yarka St. Petersburg	Arches
Golden Fluid Acrylics	And much more!

## ArtMaterials

2728 Lyndale Avenue South, Minneapolis, MN 55408  
612.872.8088 [www.ArtMaterialsOnline.com](http://www.ArtMaterialsOnline.com)

## Northstar Meetings

*Held at The Roseville Oval at Roseville Skating Center, 2661 Civic Center Dr. Directions from MPLS, take Hwy. 280 to Hwy 36 and East to Snelling North Exit, turn right on County Road C, drive past Hamline Ave. and left into Civic Center Drive before Lexington Ave.*

### Upcoming Meetings:

September 17, Doug Lew  
October 15, Janet Rogers

### Upcoming Fall Workshop:

Oct. 12-16, 2009, Janet Rogers,  
"The Expressive Portrait, Figure in Watercolor. Sign up online at [www.northstarwatercolorssociety.com](http://www.northstarwatercolorssociety.com).

### Upcoming Show:

November 12, NWS Fall Reception and Award Presentations by Judge Doug Lew

## workshops and classes

### *Want to find more workshops?*

Visit the MnWS website at [www.minnesotawatercolors.com](http://www.minnesotawatercolors.com) and click the "Happenings" link at the top of the page.

Here's a glimpse of what you will find; Jan Fabian Wallake Bloomington, Minnesota workshop in September; Larry Johnson's Springfield, Oregon workshop in November; Georgia Kandiko's Cicily trip in May; Ceile Hartleib's on-going Friday morning workshop; and many more.

To include your listings on the website please e-mail information to [webmaster@minnesotawatercolors.com](mailto:webmaster@minnesotawatercolors.com)

## MEMBER happenings

### Send member news to:

BrushStrokes, 10910 Quebec Ave. S., Bloomington, MN 55438 or email [tweseman@earthlink.net](mailto:tweseman@earthlink.net). Images are welcome and used as space permits.

- ▶ **Terry Genesen Becker's** watercolor "Balance" was selected for Watercolor U.S.A 2009, a national competitive exhibition sponsored by the Springfield Art Museum, Springfield Missouri. Terry's watercolor "Hen in the City" was selected for the Red River Watercolor Society's Annual National Juried Watermedia Exhibition in Fargo ND.
- ▶ **Lana L. Grow** received a recognition award and a merchandise credit for her entry "Catch the Rhythm Join the Party", in the Red River Watercolor Society. Her "Play it Again in Triple Time" was accepted in the International Acrylic Painters Society 2009 show. Her painting "Liberal Rhythms Released" was accepted in the annual San Diego 2009 International Exhibition.
- ▶ **Sandra Muzzy's** painting entitled "Eagles" was selected for the Red River Watercolor Society's Annual National Juried Watermedia Exhibition in Fargo ND.
- ▶ **Julie Schroeder** will be showing her work at Dunn Bros. Coffee in Roseville from July 3 - August 28. An opening reception will be held on Aug. 6 from 6 - 8 p.m. Details and location are available on her website, [www.livingwatercolours.com](http://www.livingwatercolours.com)
- ▶ **Jan Fabian Wallake** has paintings accepted in both the Red River Watercolor Society Exhibition and in the National Watercolor Society Member's Exhibition.

### Call for artists

Kansas Watercolor Society National Exhibition 2009. November 20, 2009 - January 3, 2010. Call 316-634-2787 or visit [www.kansaswatercolor.com](http://www.kansaswatercolor.com) for more information.

### Last call for entries

Edina Art Center calls for entries in 25th-Annual Juried Art Exhibition. The deadline for submission is September 9. Contact Diana Hedges, 952-903-5783 or Anne Spooner, 952-903-5789 or visit [www.EdinaArtCenter.com](http://www.EdinaArtCenter.com) for more information.

## Minnesota Watercolor Society 2009 Fall Open Exhibition

Our Members Fall Exhibition is coming up soon and we hope to see you there. Here are a few key reminders.

### Registered Artists:

Drop your work off at the Bloomington Art Center on Saturday, September 19 between 9 - 11 a.m.

### Reception and Awards Ceremony:

Invite your friends and family to the reception and awards ceremony on October 8 between 6 - 8:30 p.m. The Award Ceremony is scheduled for 7 p.m.

### Exhibition Dates:

The exhibition will be on display at the Bloomington Art Center September 24 - November 13, 2009.

### Pick Ups after the Show:

Please arrange to pick up your work at the Bloomington Art Center on Saturday, November 14 between 9 - 12 a.m.



"Temperance River"  
by Steve Brumbaugh



## MnWS calendar

*Programs are held the second  
Thursday of the month at 7 p.m.*

**Sept 10** Andy Evansen

*Location: Christ Presbyterian  
Church, 6901 Normandale Blvd.,  
Edina, MN (Corner of 70th St. S.  
and Hwy 100)*

**Oct 8** MnWS Fall Exhibition

*Reception & Awards: 6 - 8:30 p.m.  
Location: Bloomington Art Center*

## MEMBERSHIP APPLICATION

**Mail your application and check payable  
to Minnesota Watercolor Society to:**

Carol Wingard, Membership Chair  
10427 Fawns Way  
Eden Prairie, MN 55347

### MnWS Membership Dues:

- ☐ Single \$30
- ☐ Couple/Family: \$40
- ☐ Seniors (65+) \$25

Name \_\_\_\_\_

Address \_\_\_\_\_

City \_\_\_\_\_

State, Zip \_\_\_\_\_

Telephone \_\_\_\_\_

Email \_\_\_\_\_

☐ Check here to have your name removed from  
the list sent to our exhibition award donors who  
mail product information to our members.



## FINE ART PRINTING

*Professional print services using the  
finest quality paper, canvas and ink.*

Featured Artist:



© Dan Wiemer

715.792.5556

[www.husomandrose.com](http://www.husomandrose.com)

[info@husomandrose.com](mailto:info@husomandrose.com)

3 miles from Red Wing, MN

*“To further development  
of the watercolor artist  
by providing a  
supportive environment  
with education and exhibition  
opportunities, and to promote  
public appreciation and greater  
visibility of the art.”  
— MnWS Mission Statement*

10427 Fawns Way, Eden Prairie, MN 55347-5117

