

## Minnesota Watercolor Society 2010 Juried Spring Show

The Spring Show, "Swing into Spring!" had a stunning selection of paintings this year. Our judge, Greg Lipelt, had the very difficult task of choosing from 154 entries! Thank you, Greg, for your expertise, wisdom and artistic eye. It was a difficult task. A record number of entries!

Best of Show went to Virginia Olson for her piece, "Up in the Sky So Blue." Jeanne Bourquin won the Emrich-Stordahl Founder's Award for her piece titled, "Light Source River." First Honor went to Wendy Westlake for "Plaited Callas," Second Honor went to Terry Genesen-Becker for "New World Canopic Jar-Hare" and Third Honor went to Andy Evansen for his painting, "Humbled." Award of Merits went to Rosemary Guttormson, "Reawakening," Sandra Muzzy, "Yearning for the Light" and James Turner, "Tree of Life." Honorable Mentions went to Barbara Duffy, "Old Soul," Diane Posselt-Monroe, "Fjord," Sandy Yarnes, "Moose," Dan Wiemer, "Approaching Storm," Jennifer Stone, "Coordination" and Susan Zavadil, "Birdhouse."



"Birdhouse" by Susan Zavadil

People's Choice Award goes to Susan Zavadil and her beautiful painting, "Birdhouse." Congratulations Susan. Members can view all of the paintings in the April/May newsletter or on the MnWS website at [minnesotawatercolors.com](http://minnesotawatercolors.com).

Thank you to everyone who participated this year, to everyone who volunteered, to everyone who helped with drop off, awards, hospitality and the reception. A special thank you to Silverwood Gallery for allowing us to exhibit at their beautiful facility. Thank you to Steffanie at Artist Choice in St. Anthony for being our sponsor. A huge thank you to our board members and especially Catherine Hearing and her husband David, who got me out of more "computer binds" than I can count. Next year we hope to have even more "bugs" worked out so that the task of these shows will be less daunting for members and the next show chairperson. Kudos to those of you who got out of your comfort zone, and emailed me your digital images. Over 97 percent of you did!

Congratulations to all the members who were accepted into the Spring Show. For those of us who didn't get into the show, there is always next year. We better get busy!

Sincerely,  
**Deb Magelssen**  
Spring Show Chair

### Ever thought about being a juror?

Instead of the usual painting demo at our monthly meetings, our fall opener, September 9, will feature a role playing exercise. You'll be asked (playing the role of juror) to evaluate eighty paintings and select sixty for a show and reject the remainder. Further, you'll be required to determine ten awardees: a Best of Show, the Evansen Cup,

the E. White Warm & Fuzzy and the Hearing Prize, the 1st, 2nd and 3rd Honors, and three Honorable Mentions.

This role playing exercise was field tested at the February meeting of the Minnesota Artists Association with great enthusiasm. Watch the September issue of Brushstrokes for more details.

*from the President*

As I write this last message as president of the MnWS, I reflect that two years have gone by very quickly. When I took this position, I thought that producing a column for the newsletter every month would be a daunting task! It went more smoothly than expected, and in truth, (because we reduced the number of newsletter editions each year) I only had to write six columns this year, instead of ten. But it seems that each month when I sat down to write, I was usually

inspired by something that took place at our monthly meeting.

You are an inspiring group of artists and it was my privilege to be able to serve as your president. The board takes its direction from the membership and everything that we are able to accomplish comes by suggestion from the membership. We are here to implement your ideas. Each meeting I meet new members and see the excitement of those who are new to the organization. There is a wonderful and vibrant feel to the MnWS. You have done a great job of communicating our mission to the watercolor community. Our mission states, "To further the development of the watercolor artist by providing a supportive environment with education and exhibition opportunities, and to promote public appreciation and greater visibility of the art." I believe that we are meeting that mission.

I want to thank all of you for the help you have given me these past two years. Deb Chapin will be our new president starting in September, and I will be leaving you in very capable hands. Deb served on our board for many years as the Spring Show Chair, turning that job over to Deb Magelssen this past year. She organized our Spring Shows for four years and did a wonderful job. Anyone who can handle the level of organization that it takes to put a show together can do a great job as president of this organization! Deb has served on the board this past year as vice-president and was recently president of the Pastel Society.

I have enjoyed the chance to get to know many of you and to make some wonderful friendships. When I first joined the organization, I knew no one, but by becoming involved at the board level, I solved that problem! There are many ways to help out and meet new people. Our show chairs are always looking for people to help with the enormous task of putting on a show. Each volunteer is an immense help in this process. Hospitality looks for people to bring treats to our monthly meetings. Board positions turn over every two years and need to be filled with new volunteers. We are looking for a new volunteer this coming year. We would like to have a person who is "electronically literate" to be in charge of camera/projector/computer technology at our meetings. We need someone who knows how (or will learn how) to use our equipment and will take the responsibility of getting it set up for the meetings. If you have an interest in doing this, please contact me or Deb Chapin. This organization runs on volunteers and in order to run effectively, we need a steady stream of volunteers. Please consider becoming involved this next year.

I finally want to thank our current board members for the service they have given. This board functions very effectively and has worked together so well. I am so impressed by what they have accomplished. Many thanks to all of you for all the help you have given me.

I'm looking forward to seeing you all in September as "Past President!"

**BOARD OF DIRECTORS**

<b>President</b>	Catherine Hearing, 651-777-8158 cathy@chearding.com
<b>Vice President</b>	Deb Chapin, 952-890-8684 debchapin@hotmail.com
<b>Secretary</b>	Dianne Jandt, 952-891-2375 artistjandt@aol.com
<b>Treasurer</b>	Georgia Kandiko, 952-445-3406 jgkandiko@msn.com
<b>Exhibition, Fall</b>	Sonja Hutchinson, 952-471-0098 sonjahutchinson@mchsi.com
<b>Exhibition, Spring</b>	Deb Magelssen, 651-464-5326 debmagelssen@yahoo.com
<b>Historian</b>	Marian Alstad, 612-824-6460 mardi4011@aol.com
<b>Hospitality</b>	Phyllis Winther, 952-474-7756 exel3@aol.com
<b>Librarian</b>	Mary Brainard, 952-894-3578 brainard@q.com
<b>Newsletter</b>	Therésa Weseman, 952-200-8592 tweseman@earthlink.net
<b>Membership</b>	Carol Wingard, 612-396-6120 cjwin48@hotmail.com
<b>Program</b>	Judy Haeny, 612-866-3670
<b>Publicity</b>	Kathleen Riopelle, 612-869-0352 kkriopelle@att.net
<b>Workshop</b>	Kathleen Sovell, 612-374-3195 jksovell@comcast.net Susan Zinschlag, 651-437-9327 s.m.zinschlag@att.net Dianne Jandt, 952-891-2375 artistjandt@aol.com
<b>Northstar Liaison</b>	Marilyn Jacobson gjake@comcast.net

**BRUSHSTROKES**

<b>Editor</b>	Therésa Weseman
<b>Mailings</b>	Bev Beckman
<b>Proofreader</b>	Jeanne Long

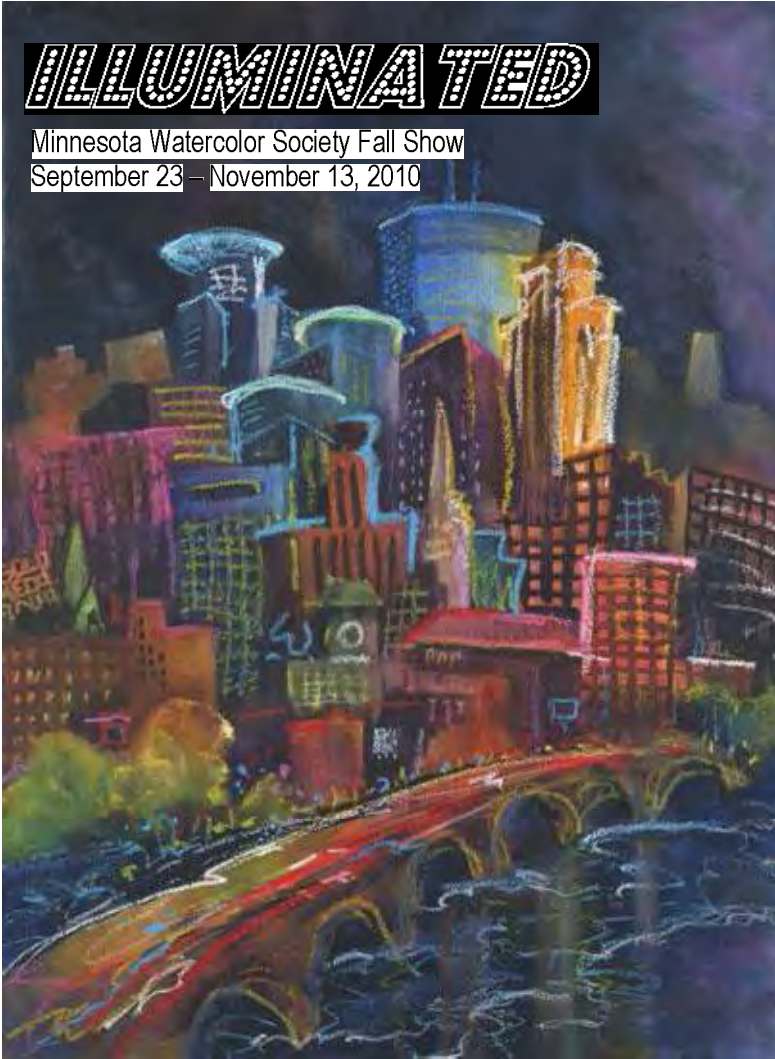
**Website**

[www.minnesotawatercolors.com](http://www.minnesotawatercolors.com)

**BrushStrokes Newsletter**

BrushStrokes is published September, October/November, December/January, February/March, April/May, June

**MnWS BrushStrokes Editor & Advertising**  
10910 Quebec Ave. S., Bloomington, MN 55438  
tweseman@earthlink.net



*"Night Lights" by Nancy Patrick Carney*

### Schedule of Events

Postmark Deadline: Wednesday, September 1

**Drop Off Dates: Monday– Wednesday  
September 13-15  
Between 11:00 am – 1:00 pm**

Exhibition opens: Thursday, September 23

Award Reception: Thursday, October 14  
6:00 - 8:30 pm  
Awards Ceremony – 7 pm

**Pick up Dates: Monday – Tuesday  
November 15 & 16  
Between 11:00 am – 1:00 pm**

The inspiration for this year's show is illumination. Whether you use this theme to feature the lights and darks in your work or as subject matter, the choice is yours. We encourage you to illuminate your own point of view and discover something new and exciting in your work.

### Eligibility:

"Illuminated" is a non-juried show which is open to all Minnesota Watercolor Society members in good standing who have paid their dues through May 31, 2011. You may join the Minnesota Watercolor Society or renew your membership by sending a separate check for the membership dues with your entry form and entry fee.

Each member may enter one painting. The first 75 paintings will be accepted. We will return forms and entry fees arriving after space is filled or the deadline has passed.

### Specifications:

All paintings must be original, two-dimensional works in water-based media on a paper surface (including YUPO), that may or may not be altered (e.g., gesso, gel medium), or on canvas or board that has been treated or coated to accept watermedia, applied in a transparent or opaque manner (no impasto acceptable). Collage (no found materials acceptable), if used, must be treated with water media only and subordinate to the overall painting. Drawing elements (ink, pastel, crayons, pencil, etc.) are acceptable. Copies of other artists' work will not be accepted, nor will copies of published photos or work from photos not taken by the artist. Paintings must be original, completed within the last two years, not done in a workshop or under the supervision of an instructor. Works previously shown in a MnWS exhibition or a Burnsville Performing Arts Center exhibition are not eligible.

Paintings may not be removed from exhibit prior to November 13.

Questions?

Call Sonja Hutchinson at (952) 471-0098 or e-mail at [sonjahutchinson@mchsi.com](mailto:sonjahutchinson@mchsi.com).

**To Enter:**

Entries must be postmarked by Wednesday, September 1, 2010 and completed in full. Space is limited to the first 75 paintings so mail entries early. Entries post-marked later than September 1 will not be included in the show. Entries postmarked after September 1 will be returned.

Mail completed entry form, \$20 entry fee, and separate check for membership fee, if applicable.

**Mail to: MnWS Fall Show 2010**  
**c/o Sonja Hutchinson**  
**1424 Baldur Park Road**  
**Wayzata, MN 55391**

**Fees:**

The entry fee is \$20. One painting per artist. This is a non-refundable fee. All entry fees support MnWS exhibitions. Make checks payable to Minnesota Watercolor Society. Enclose a separate check for new or renewal membership dues (\$30 single; \$40 couple/family, \$25 senior (65 or older), if necessary.

**New Online Registration Option:**

Check out the Minnesota Watercolor Society website for the new online registration and payment process. The September 1 'postmark' date applies to forms and payments completed online.

**Awards:**

Awards Reception will be held at Burnsville Performing Arts Center Thursday, October 14th, 6-8:30 p.m., with the Awards Ceremony at 7 p.m. Awards will be given in the following categories: Best of Show, Emrich/Stordahl Founder's Award, First, Second and Third Honors, Honorable Mention, Award of Merit and People's Choice.

**Sales:**

Paintings may be offered for sale or "Not for Sale" (NFS). Burnsville Performing Arts Center charges a 25% commission on all sales. BPAC does not cover artwork insurance and will take reasonable care in the handling and securing of your work during the exhibit.

**Delivery of Artwork – New this year:**

Delivery of paintings is during weekdays in 2010. You can drop off your paintings Monday – Wednesday, September 13-15 between 11:00 am and 1:00 pm. The Burnsville Performing Arts Center is located at: 12600 Nicollet Avenue in Burnsville, MN. You can find directions at [www.burnsvillepac.com](http://www.burnsvillepac.com).

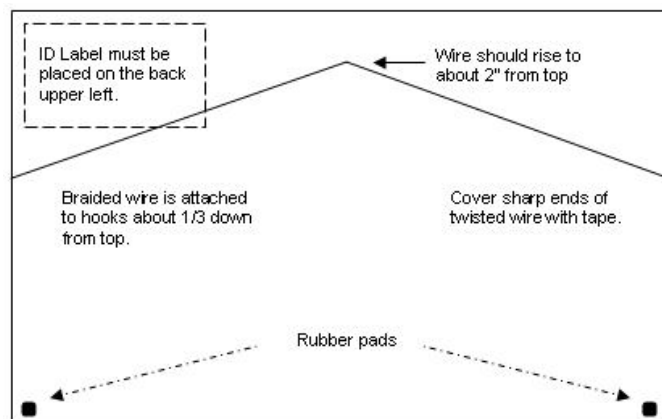
Artwork must conform to MnWS mat and frame requirements. Attach the Exhibition ID Label to the back top left of your artwork.

**Exhibition Close & Pick Up – New this year:**

Pick up paintings from Burnsville Performing Art Center on Monday or Tuesday, November 15 & 16 between 11:00 – 1:00 am. No pickups before this time. A late fee of \$5 per day will be charged for any painting not picked up by the 16<sup>th</sup>.

**Matting and Framing Requirements:**

- White, off-white and light colored neutral mats only. No colored mats.
- Frames must be simple and sturdy and have wire and hooks mounted as specified in the diagram.
- Recommended: Rubber pads on bottom corner

**ENTRY CHECKLIST**

- Completed ALL parts of the entry form?
- Included your check for \$20 entry fee?
- Separate check for membership fee or renewal?
- Met matting and framing requirements?
- Affixed ID label to the upper left back of painting?
- Signed your entry form?

**Nearest Inches:**

All dimensions on the entry form should be given to the nearest inch- no fractions. This greatly simplifies our computer entries.

**Volunteers:**

Can you help with delivery? Awards? Hospitality? Pick up? Here's where you can help make this show a success. It's fun and rewarding. Check a box on your entry form.

Feel free to make photo copies of this entry form and pass them on to your friends.



*Art on the Island*  
Where you can rest and  
rejuvenate your creativity!

Treat yourself to a 5 day Workshop  
on Madeline Island • La Pointe, WI



**August 23–27 • Karen Knutson**  
“Contemporary Paintings in all Mediums”

**August 23–27 • Karlyn Holman**  
“Watercolor, Fun and Free”

**\$840** includes tuition, lodging and two meals per day.

- NEW CLASSROOMS
- NEW LODGING ACCOMMODATIONS

Go to [www.madelineschool.com](http://www.madelineschool.com)  
for complete details and to register on-line

### exhibiting opportunities for MN artists

#### Two exhibiting opportunities at the Phipps Center For the Arts

The 24th Annual Members Art Exhibition, July 16 – August 15, Entry form deadline, Friday, July 9. The Phipps also seeks submissions from visual artists in Wisconsin and Minnesota for a variety of exhibition opportunities. Entry form deadline for this opportunity is July 1. Please contact Anastasia Shartin at 715-386-2305, ext. 103 or [ashartin@thephipps.org](mailto:ashartin@thephipps.org).

#### Kansas Watercolor Society National Exhibition 2010

The Wichita Center for the Arts announces the Kansas Watercolor Society National Exhibition 2010 held November 19 - January 2. The exhibit is open to all artists living and working in North America. Only original paintings in primarily aqueous medium (no water-based oils) on paper are acceptable. Each entry must be wholly designed and executed by the artist and not shown in previous KWS National Exhibitions. Entries must be postmarked or delivered by August 2. For additional information and to download the KWS Exhibition Prospectus online, please visit [www.wcfta.com](http://www.wcfta.com).

#### Edina Art Center opportunity

The Edina Art Center is pleased to invite artists from Edina and beyond to submit their best original art in any two- or three-dimensional media for exhibition, juried competition and sale at its premiere annual event. The deadline for submission is Sept. 8. For more information, call the Edina Art Center at 952-903-5780.

### MnWS NEW MEMBERS

Darlene Hafner	Pete Sohal
Susan Nelson	Carolina Tana
Dick Reynolds	

We have 386 paid members.

*(Check the label on your newsletter to see when your membership dues are due.)*

### MEMBER happenings

#### Send member news to:

BrushStrokes, 10910 Quebec Ave. S., Bloomington, MN 55438 or e-mail [tweseman@earthlink.net](mailto:tweseman@earthlink.net). Images are welcome and used as space permits.

- ▶ **Fred Dingler** was awarded Honorable Mention for his painting “Apalachicola” in the 2009 Watermedia Showcase published in the February 2010 issue of Watercolor Artist Magazine. Fred also won Best of Show at the Bloomington Art Center for his painting “Still Standing.”
- ▶ **Jennifer Stone’s** “Summer Vision” was accepted into the Red River Watercolor Society 2010 Show and awarded a Recognition Award. Her painting “Last Call” was published in “Watercolor Without Boundaries” by Karlyn Holman.
- ▶ The following artists received awards at the Artist of Minnesota Spring Show held in Duluth, Minnesota April 30 - May 2.
  - Kathleen Sovell** First Place for Rainbow
  - Dianne Jandt** Merit Award for Frogs! Where?
  - Kathleen Sovell** Merit award for The Offering
  - Sandy Yarnes** Merit Award for Split Rock Lighthouse
  - Susan Pavlatos** Creativity Award for Last Run Before Sunset
- ▶ **Terry Genesen Becker’s** painting “New World Canopic Jar: Jaguar” was selected for Watercolor USA 2010 at the Springfield Art Museum, MO. Show runs through August 8.

### Minnesota Watercolor Workshops

**Oct. 4 - 8, 2010 (Monday-Friday)**

Linda Baker, AWS/NWS [www.lindabaker.biz](http://www.lindabaker.biz)

**Sun, Shade, & Shadow in Watercolor**

Cost \$395 Members \$435 Nonmembers

In this workshop, Linda will share her techniques and enthusiasm for capturing a strong light source in her paintings.

The use of light is a major focus of her paintings along with dancing shadows and rich shaded areas. Through pouring, wet into wet, and direct painting she will demonstrate how to glaze and layer the light. Working from your own photos and sketches, she will assist you in composition and design for a more dramatic result. Daily demonstrations, slide presentations, personal one-on-one consultations and critiques add to a fun-filled workshop.



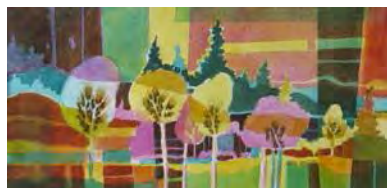
**November 13 & 14, 2010 (Saturday & Sunday)**

Karen Knutson [www.karenknutson.com](http://www.karenknutson.com)

**Pushing Landscapes to Non-Traditional!**

Cost \$95

In this 2-day workshop, students will learn how to weave colors through a design and create a quilted look to their landscapes. Thinking in simple shapes, exaggerating color and design principles will be stressed. This workshop will loosen up your style and help you think abstractly so you see shapes instead of things. Karen's teaching style is free and easy. Be ready to have fun and stretch your painting skills at the same time!



#### Workshop Registration

I would like to register for the following workshop(s)

- Linda Baker, AWS/NWS Sun, Shade, & Shadow in Watercolor Workshop**  
October 4-8, 2010 (Mon – Fri) Members...\$395  
Nonmembers...\$435  
Deposit \$125 by September 3, 2010  
Location: City of New Brighton  
Family Service Center
- Karen Knutson Pushing Landscapes to Non-Traditional! Workshop**  
Nov 13 & 14, 2010 (Sat & Sun) ..... \$95  
Location: Hopkins Center for the Arts

For detailed information about the artist or workshop visit our website at: [www.minnesotawatercolors.com](http://www.minnesotawatercolors.com)

For inquiries contact:

Kathleen Sovell, Workshop Chairperson  
Phone: 612-374-3195  
E-mail: [JKSOVELL@comcast.net](mailto:JKSOVELL@comcast.net)

Name \_\_\_\_\_

Address \_\_\_\_\_

City \_\_\_\_\_ State \_\_\_\_\_ Zip \_\_\_\_\_

Phone \_\_\_\_\_

E-Mail \_\_\_\_\_@\_\_\_\_\_

MNWS does not share e-mail addresses with others.

Please send fee or \$125 deposit for Linda Baker's workshop.

Cancellations in writing must be received no later than two weeks prior to workshop to qualify for a full refund. If the workshop is cancelled, money will be promptly refunded.

Amount Enclosed: \$ \_\_\_\_\_

Make checks payable to Minnesota Watercolor Society and mail with form to:

Workshops  
Susan Zinschlag  
2353 Glacier Way  
Hastings, MN 55033-3757  
Phone: 651-437-9327  
E-mail: [s.m.zinschlag@att.net](mailto:s.m.zinschlag@att.net)

## workshops and classes

### Want to find classes?

Visit the MnWS website at [www.minnesotawatercolors.com](http://www.minnesotawatercolors.com) and click the "Happenings" link at the top of the page.

To include your listings on the website please e-mail information to [webmaster@minnesotawatercolors.com](mailto:webmaster@minnesotawatercolors.com)

## ArtMaterials

MORE THAN JUST AN ART STORE!

Featuring an extraordinary assortment of watercolor brushes, paint, mediums, papers, blocks, and more!

# 20% OFF

ALL WATERCOLOR PAINT, PAPER, AND BRUSHES!

COUPON MUST BE PRESENTED AT TIME OF PURCHASE.  
CAN NOT BE COMBINED WITH ANY OTHER COUPON OR OFFER.  
DISCOUNT APPLIES TO NON-SALE ITEMS ONLY.  
DISCOUNT APPLIED AT REGISTER.  
OFFER EXPIRES JUNE 30, 2010

2728 Lyndale Avenue South, Minneapolis, MN 55408  
612.872.8088 [www.ArtMaterialsOnline.com](http://www.ArtMaterialsOnline.com)

## Northstar Meetings

Held at *The Roseville Oval at Roseville Skating Center, 2661 Civic Center Dr.*  
*Directions from MPLS, take Hwy. 280 to Hwy 36 and East to Snelling North Exit, turn right on County Road C, drive past Hamline Ave. and left into Civic Center Drive before Lexington Ave.*

**Workshop: Oct. 18 - 22, 2010**

Kate Worm, *The Still Life In Motion*

More info is on the Northstar website:  
[www.northstarwatercolorssociety.com](http://www.northstarwatercolorssociety.com).

## exhibits

Marian Alstad has an upcoming watercolor show at the Edina Art Center. *Marian and Friends*, is being held in honor of Marian's 25 years of teaching. The exhibit includes artists: Agnes Fine, Martha Frances, Barbara DeCosse, Barbara Lanzo, Diane Monroe and Judy Metzger. Opening reception is Thurs., July 22, 5 – 8 p.m. Show runs until August 19. 4701 W 64th St., Edina.

*The Watercolor Show*, May 22 – July 17, FrameWorks Gallery & Custom Picture Framing in St. Paul. Includes work by 11 artists; Stuart Loughridge, Emmy White, Dan Weimer, Dick and Jan Green, Andy Evansen, Frank Zeller, Catherine Hearing, Arthur Weeks, Calvin deRuter and Jeanne Long.

## Wednesday Morning Plein Air Schedule

\*\*\* Open To All Painters \*\*\*

Painters meet at 9:30 a.m. If it is raining there are not many painters, but come if you want to try out raindrops on your paintings. Lunch is organized on-site at a near-by restaurant or by bringing a bag lunch. Below are the July and August schedules. Please see the April/May newsletter for June dates.

July 7 **Hidden Falls**, off of Shepherd Road, scenes of our famous river.

July 14 **Anthony on the Main**, 117 Main Street SE by Nicollet Inn. Meet near St. Anthony Main Theater, meter parking.

July 21 **Loring Park**, meet on the north side. Take Hennepin to Maple (Utrecht Art Store, 1601 Hennepin Ave.) turn south to Hammond which borders the north side of the park. Parking is by meters.

July 28 **Dave Schlieff's Backyard**, 2977 Northview, Roseville. Lots of flowers.

Aug 4 **Seven Corners**, St. Paul, by Cosetta's, 211 7th St. West St. Paul.

Aug 11 **Lake Calhoun**, meet at the boat rental and pavilion area.

Aug 18 **Minneapolis Farmer's Market**, behind St Mary's Basilica, 314 E. Lyndale. Arrive early to get parking. Park under the overpass or near the vendors.

Aug 25 **St. Paul Cathedral**. Park in lot south of the cathedral.

Call Emmy White, 612-825-8312 or Bob Astrup, 763-571-4605 with questions. Bob and Emmy won't be at every paint-out, but will be at many.

Metroframe.com  
METROPOLITAN PICTURE FRAMING  
classic exhibition frames wholesale



Complete  
framing advice  
on the web.

952-941-6649  
[www.metroframe.com](http://www.metroframe.com)

Minnesota Watercolor Society Website  
[www.minnesotawatercolors.com](http://www.minnesotawatercolors.com)

### The MnWS website offers many opportunities

Not only does the MnWS website have pages for "Event Info" and "Become a Member" it also has a page for members to list their websites under "Member Links." It also has a page for members to list workshops they are offering and awards they have currently received under the "Happenings" page. Also, view past issues of the "Newsletters" and "Recent Show Awards."

To submit information to the MnWS website e-mail our web master at [webmaster@minnesotawatercolors.com](mailto:webmaster@minnesotawatercolors.com)

## MnWS calendar

Programs are held the second Thursday of the month at 7:00 p.m.

**Sept. 9** Ever thought about being a juror. Join us for this role playing exercise.

**Location:** Christ Presbyterian Church, 6901 Normandale Blvd., Edina, MN (Corner of 70th St. S. and Hwy 100)



**Wet Paint inc.**  
Artists' Materials & Framing

1684 Grand Avenue Saint Paul  
651.698.6431 info@wetpaintart.com  
www.wetpaintart.com

Your most complete local source for  
watercolors & mediums, brushes,  
watercolor papers, pads & blocks

## MEMBERSHIP APPLICATION

Mail your application and check payable to Minnesota Watercolor Society to:

Carol Wingard, Membership Chair  
10427 Fawns Way  
Eden Prairie, MN 55347

### MnWS Membership Dues:

- Single \$30
- Couple/Family: \$40
- Seniors (65+) \$25

Name \_\_\_\_\_

Address \_\_\_\_\_

City \_\_\_\_\_

State, Zip \_\_\_\_\_

Telephone \_\_\_\_\_

Email \_\_\_\_\_

Check here to have your name removed from the list sent to our exhibition award donors who mail product information to our members.

**H•R** HUSOM & ROSE  
PHOTOGRAPHICS  
715.792.5556

FINE ART PRINTING  
www.husomandrose.com

Featured Artist:



© Richard R. Ward

**Professional Print Services**  
using the finest quality paper,  
canvas and ink.

info@husomandrose.com  
3 miles from Red Wing, MN

— MnWS Mission Statement —  
"To further development of the watercolor artist by providing a supportive environment with education and exhibition opportunities, and to promote public appreciation and greater visibility of the art."

10427 Fawns Way, Eden Prairie, MN 55347-5117

