

Minnesota Watercolor Society 2011 Juried Spring Show in review



Peoples Choice Award Winner
"Series 5 #18," Nancy Yermakoff

Genesen Becker for her piece, "Canopic Jar – Bear." Third Honors went to Jim Kuether for his piece, "The Birds Nest." Awards of Merit went to Kathy Miller, "Cones In the Breeze," Georgia Kandiko, "Iguana," and John (Jack) O'Leary, "Reclining Figure." Honorable Mentions went to Doug Meythaler, "Gawkers Slowdown," Lynn Hannah O'Gorman, "Evening Break," Tara Sweeney, "Teapot," Marian O'Shaughnessy, "Appalachian Highway Poppies," Dick Green, "Cold Stop," and Wendy Westlake, "Out of Bounds." People's Choice Award goes to Nancy Yermakoff for her painting titled, "Series 5 #18." Please congratulate Doug Meythaler and Marian O'Shaughnessy for earning MNWS signature status.

Members can view the award winning paintings in the April/May newsletter or on the MNWS website at www.minnesotawatercolors.com. Also, check out the MNWS's flickr page for photos of the reception at www.flickr.com/photos/mnws.

Thank you to everyone who participated this year. Thank you to all our volunteers who helped with drop offs, awards, hospitality and the reception. A special thank you to Phyllis Winther for heading up the hospitality. Thanks goes out to Kyle Goodmanson for providing us with live music and the MNWS board for their support. We're grateful to Minnetonka Center for the Arts and Robert Bowman for allowing us to exhibit in their beautiful gallery. Thank you Artist's Choice and Corporate Art Force for being our award sponsors. Also, please don't forget to thank Deb Magelssen our Spring Show Chair. Great job Deb.

Congratulations to all the members who were accepted into the Spring Show. For those of us who didn't get into the show, there is always next year.

The Spring Show, "Rejuvenated!" had a great selection of paintings this year. Judge, Joanne Price, had the task of choosing from 142 entries. Thank you, Joanne, for your keen eye and expertise.

Best of Show went to Gail Vass for her piece, "Finches to the Feast." Catherine Hearing won the Emrich-Stordahl Founder's Award for her piece, "Delphinium Blue." First Honors went to Carol Larson for her piece, "Dragonflies." Second Honors went to Terry

Last Call for MNWS Members' Day

Members' Day is Saturday, June 25 at Fish Lake Regional Park in Maple Grove. Participants will enjoy demos by four artists representing an exciting range of painting styles.

Nancy Carney will demonstrate her procedure for creating the gesture sketches on which she bases her paintings with multiple people. Bring your sketch books. Cal deRuyter will demonstrate his inventive and somewhat unorthodox use of watercolor in his sweeping, color saturated landscapes. In this demo he will focus particularly on clouds.

After a break for box lunches we'll move outdoors for plein air painting demos. Bonnie Featherstone will demonstrate her fast, fun and simple approach to keeping a watercolor travel diary. Frank Wetzel will teach us the art of seeing before starting to paint. He will show us how to find and paint the story behind our subject.

After the plein air demos, members are invited to try plein air painting on the park grounds. Later on we'll reconvene at the pavilion for an informal critique of our work.

Registration ends June 17. Fill out the form in this issue of *BrushStrokes* or go to our website, www.minnesotawatercolors.com. Join us for an inspiring day.

Questions? Call MarySue Krueger 612-716-4829 or email MarySue at marysue@marysuekrueger.com.

from the President

The week of May 9 the Minnesota Watercolor Society hosted a workshop with Gloria Miller Allen and a meeting demo by Sandy Muzzy. It was a very good week for members! I heard great things about the workshop and really enjoyed Sandy Muzzy's program. I left knowing that I would spend more time in my own back yard painting just for me and the moment.

I headed for the YMCA on Friday to swim and shared a lane with a friend. She's an artist from Lakeville and we discussed approaching art that is personal to us, without the background question, "Will I sell this piece?" Certainly it's a thrill to sell our work, but Sandy reminded us that painting just for ourselves gives us balance and allows us to explore our medium and our sense of design and color. It also allows us the freedom to fool around with ideas that connect us to the wonder of creativity.

We have always known that demos are the most popular programs and they constantly remind me that learning never ends in art. Weekend and week-long workshops, demos, and conversations with fellow artists are opportunities to learn and share our own insights. It's difficult to envision creating art as a stale endeavor!

I hope you have given some thought to joining us on Members' Day June 25. Let's have a great turnout. It will be a day to dust off artistic ideas and seeing where they can be rejuvenated. Enjoy the day, the park, the demos, fellow artists, and the lunch, and come away ready to give summer a new look in your art.

I can't end this letter to you without announcing that Sandy Koeger and Bonnie Featherstone will be our co-chairs for the MNWS workshops. Dianne Jandt and Susan Zinschlag will be assisting. I want to give a special thank you to Kathleen Sovell for her work in providing quality and exciting workshops for our members. I also need to give another special thank you to Sonja Hutchinson, who is also leaving the Board as Fall Show Chair. We enjoyed her efforts in the past two years with fine shows and great show openings. She will be helping Victor Perlbachs as he takes over this position. Remember members, we still need a Hospitality Chair and Spring Show Chair!

Have a great summer painting!

**BOARD OF DIRECTORS**

- President** Deb Chapin, 952-890-8684
chapindeb@comcast.net
- Past President** Catherine Hearing, 651-777-8158
cathy@chearding.com
- Vice President** Deb Magelssen, 651-464-5326
debmagelssen@yahoo.com
- Secretary** Dianne Jandt, 952-891-2375
artistjandt@aol.com
- Treasurer** Georgia Kandiko, 952-445-3406
jgkandiko@msn.com
- Exhibition, Fall** Victor Perlbachs, 952-212-0532
vperlbachs@comcast.net
- Exhibition, Spring** Deb Magelssen, 651-464-5326
debmagelssen@yahoo.com
- Historian** Marian Alstad, 612-824-6460
mardi4011@aol.com
- Hospitality** Phyllis Winther, 952-474-7756
exel3@aol.com
- Librarian** Mary Brainard, 952-894-3578
marybrainard@hotmail.com
- Membership** Carol Wingard, 612-396-6120
cjwin48@hotmail.com
- Newsletter** Therésa Weseman, 952-200-8592
tweseman@earthlink.net
- Program** Wendy Westlake, 507-732-7778
westlakewatercolor@yahoo.com
- Publicity** Kathleen Riopelle, 612-869-0352
kkriopelle@att.net
- Technology** Peter Sohal, 612-501-0524
petersohal@hotmail.com
- Workshop** Bonnie Featherstone, 952-890-0889
bfeather@usfamily.net
Sandy Koeger, 952-891-2345
zzandy@aol.com
Susan Zinschlag, 651-437-9327
s.m.zinschlag@att.net
Dianne Jandt, 952-891-2375
artistjandt@aol.com
- Northstar Liaison** Marilyn Jacobson
gjake@comcast.net

BRUSHSTROKES

- Editor** Therésa Weseman
Mailings Bev Beckman
Proofreader Jeanne Long

Website

www.minnesotawatercolors.com

BrushStrokes Newsletter

BrushStrokes is published September, October/November, December/January, February/March, April/May, June

MNWS BrushStrokes Editor & Advertising
10910 Quebec Ave. S., Bloomington, MN 55438
tweseman@earthlink.net

Mosaic

Minnesota Watercolor Society Fall Show
September 25 – November 4, 2011



“Under the Arc” by Gail Speckmann

Schedule of Events

Postmark Deadline:	Thursday, September 1
Drop Off Date:	Saturday, September 24 Between 9:00 – 11:00 am
Exhibition opens:	Sunday, September 25
Award Reception:	Tuesday, October 11 6:00 - 8:30 pm Awards Ceremony – 7:00 pm
Pick up Dates:	Saturday, November 5 Between 10:00 am – noon

The inspiration for this year’s show is the many colors and moods of Autumn. Take a new approach to your subject: fog, wet, deep colors, long shadows and reflections all play an important role at this time of year.

Eligibility:

“Mosaic, The Colors of Autumn” is a non-juried show which is open to all Minnesota Watercolor Society members in good standing who have paid their dues through May 31, 2012. You may join the Minnesota Watercolor Society or renew your membership by sending a separate check for the membership dues with your entry form and entry fee.

Each member may enter one painting. The first 80 paintings will be accepted. We will return forms and entry fees arriving after space is filled or the deadline has passed.

Colonial Church will not accept depictions of nude figures in their gallery.

Specifications:

All paintings must be original, two-dimensional works in water-based media on a paper surface (including YUPO), that may or may not be altered (e.g., gesso, gel medium), or on canvas or board that has been treated or coated to accept watermedia, applied in a transparent or opaque manner (no impasto acceptable). Collage (no found materials acceptable), if used, must be treated with water media only and subordinate to the overall painting. Drawing elements (ink, pastel, crayons, pencil, etc.) are acceptable. Copies of other artists’ work will not be accepted, nor will copies of published photos or work from photos not taken by the artist. Paintings must be original, completed within the last two years, not done in a workshop or under the supervision of an instructor. Works previously shown in a MNWS exhibition are not eligible.

Paintings may not be removed from exhibit prior to November 5.

Questions?

Call Victor Perlbachs at 952-212-0532 or e-mail him at vdperlbachs@comcast.net.

To Enter:

Entries must be postmarked by Thursday, September 1, 2011 and completed in full. Space is limited to the first 80 paintings so enter early. Entries post-marked later than September 1 will not be included in the show. Entries postmarked after September 1 will be returned.

Mail completed entry form, \$20 entry fee, and separate check for membership fee, if applicable.

Mail to: MNWS Fall Show 2011
c/o Victor Perlbachs
4412 Fondell Drive
Edina, MN 55435

Fees:

The entry fee is \$20. One painting per artist. This is a non-refundable fee. All entry fees support MNWS exhibitions. Make checks payable to Minnesota Watercolor Society. Enclose a separate check for new or renewal membership dues (\$30 single; \$40 couple/family, \$25 senior (65 or older), if necessary.

Online Registration Option:

Check out the Minnesota Watercolor Society website for the online registration and payment process. The September 1 'postmark' date applies to forms and payments completed online.

Awards:

Awards Reception will be held at Colonial Church of Edina Tuesday, October 11th, 6-8:30 p.m., with the Awards Ceremony at 7 p.m. Awards will be given in the following categories: Best of Show, Emrich/Stordahl Founder's Award, First, Second and Third Honors, Honorable Mention, Award of Merit and People's Choice.

Sales:

Paintings may be offered for sale or "Not for Sale" (NFS). Sales will be handled by MNWS, with a 10% commission donated to Colonial Church.. Colonial Church does not cover artwork insurance and will take reasonable care in the handling and securing of your work during the exhibit.

Delivery of Artwork:

Deliver of paintings is on Saturday, September 24 between 9:00 am and 11:00 am. The Colonial Church of Edina is located at 6200 Colonial Way, Edina, MN 55436. You can find directions at www.colonialchurch.org

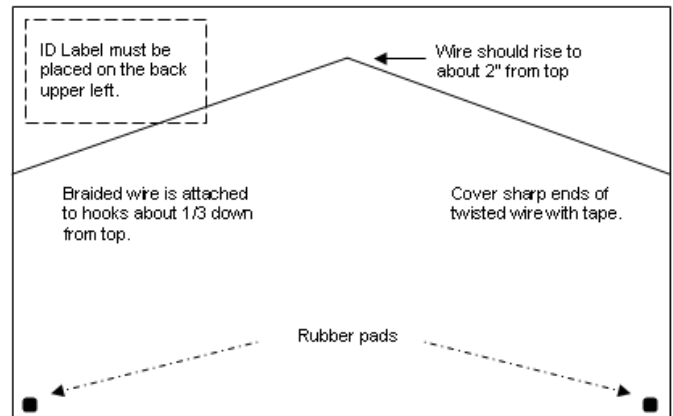
Artwork must conform to MNWS mat and frame requirements. Attach the Exhibition ID Label to the back top left of your artwork.

Exhibition Close & Pick Up:

Pick up paintings from Colonial Church on Saturday November 5, between 10:00 am and noon.

Matting and Framing Requirements:

- White, off-white and light colored neutral mats only. No colored mats.
- Frames must be simple and sturdy and have wire and hooks mounted as specified in the diagram.
- Recommended: Rubber pads on bottom corner

**ENTRY CHECKLIST**

- Completed ALL parts of the entry form?
- Included your check for \$20 entry fee?
- Separate check for membership fee or renewal?
- Met matting and framing requirements?
- Affixed ID label to the upper left back of painting?
- Signed your entry form?

Nearest Inches:

All dimensions on the entry form should be given to the nearest inch- no fractions. This greatly simplifies our computer entries.

Volunteers:

Can you help with delivery? Awards? Hospitality? Pick up? Here's where you can help make this show a success. It's fun and rewarding. Check a box on your entry form.

Feel free to make photo copies of this entry form and pass them on to your friends.

ENTRY FORM

Mosaic

September 25 – November 4, 2011



“Under the Arc” by Gail Speckmann

1. **FILL OUT FORM COMPLETELY (or use online option)**
2. **PRINT ALL INFORMATION**
3. **SIGN YOUR ENTRY**

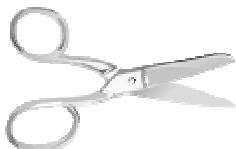
Artist’s Name: _____
 Phone _____
 e-mail address: _____
 Street Address: _____
 City _____ State _____
 Zip _____
 Title _____
 Image Size (H x W) _____
 Frame (H x W) _____
 Total Frame (H + W) _____
 Price _____
 NFS _____
 Value (Required) _____

I volunteer to help with the exhibition: Delivery Awards Hospitality Pickup

Digital Image: Entering the show includes permitting us to make a digital image of your exhibited artwork for MNWS archives. These images may be used to create an exhibition catalog or for publicity. The images will not be high resolution images from which illegal copies of your artwork could be created.

I have carefully read all the requirements on this form, understand them, and agree to abide by all the terms and conditions herein. My choice of framing and hardware meets the requirements of this entry form. I have provided all requested information.

Signature _____ Date _____



Cut entry form away from label before mailing.

Keep label to attach to your painting.

MNWS Exhibition ID LABEL
Fall 2011

PLACE ON BACK UPPPER LEFT OF PAINTING

Title _____
 Name _____
 Phone _____
 Image Size (HxW) _____
 Frame Size (HxW) _____
 Total Frame (H + W) _____
 Price _____ NFS _____ Value (Required)



Unique Setting, Exceptional Workshops

2011 Painting Workshops

May 23-27	Andy Evansen
Jun 6-10	Suzanna Winton
Jun 27-Jul 1	Cathy Taylor
Jul 11-15	Steve Rogers
Jul 11-15	Janet Rogers
Aug 1-5	Kathie George
Aug 1-5	Jan Fabian Wallake
Aug 15-19	Jan Sitts
Aug 22-26	Cheng-Khee Chee
Aug 29-Sept 2	Lian Quan Zhen
Sept 12-16	Tony van Hasselt
Sept 19-23	Laurie Humble
Sept 19-23	Caroline Jasper
Sept 26-30	Tom Francesconi



For registration information go to
www.madelineschool.com
715.747.2054 • LaPointe, WI

Make connections with watercolor enthusiasts online

While nothing can replace the value of face-to-face networking, using online networking tools such as Facebook can be a great way to make connections with other artists.

MNWS networking channels:

- LinkedIn group
- Facebook
- Twitter
- YouTube

Links to MNWS social media sites are available on our website at:
www.minnesotawatercolors.com.

Any ideas for more online channels contact Peter Sohal, Technology Chair, at
info@minnesotawatercolors.com

Preview of Ellen Jean Diederich and Joye Moon's MNWS workshops

Ellen Jean Diederich was scheduled to do this workshop in 2009. However, due to personal reasons she had to be cancel. Now recovered, she will present this week-long workshop, "Insight to See and Create What You Want to Paint," for us on October 10 – 14, 2011. The workshop is geared to all levels of artists. Ellen's focus will be on helping you learn skills and insight for your paintings. The deadline to register is August 22, 2011. The registration form for this workshop is in this issue. Log onto our website at www.minnesotawatercolors.com to learn more. To see more of Ellen Jean Diederich's work go to her website www.givinity.com.

We are honored to have Joye Moon present a two-day workshop for us on November 12 & 13, 2011. This is her only workshop in Minnesota this year. The focus of this workshop is "Exploring Texture in Watercolor." All levels of artists are welcome. Log onto our website at www.minnesotawatercolors.com to learn more. To see more of Joye Moon's work go to her website: www.joyemoon.com.

Upcoming MNWS Workshops

Ellen Diederich – 10/10 - 10/14/11	Joye Moon – 11/12 - 11/13/11
Catherine Hearing – 1/14 - 1/15/12	Pat Undis – 3/17 - 3/18/12
Andy Evansen – 5/14 - 5/18/12	

Watch upcoming newsletters for more information.

Remember MNWS memberships are due

Renewal payments were due the end of May. Payments made June 1 and later require a late payment fee of \$5 to be added to the regular membership dues.

Renew your membership online!

You can renew your membership and pay online through the MNWS website - www.minnesotawatercolors.com

Go to the website and click on the 'becoming a member' link at the top of the page. On the next screen click on the option 'click here for online membership application/renewal (PayPal or Mail)'.

Complete all the information on the next screen. Be sure to include phone number and e-mail address. Select payment method of 'PayPal.'

Ensure you click on 'submit entry.' On the next screen, click the 'pay now' button if you want to pay through PayPal. Complete all payment information and click on the 'review and continue' button. This will bring you to a screen to review your payment information. If it is correct, ensure that you click on the 'pay now' option. Once you have done this final step, you will see a confirmation of your online payment and your transaction is complete.

If you would rather pay via mail, select the 'click here for membership application via mail' option.

Complete the form, print and mail to Carol Wingard, Membership Chairperson, with a check made out to the Minnesota Watercolor Society.

If you have any questions about Membership Renewal, please contact Carol Wingard at cjwin48@hotmail.com.

"INSIGHT TO SEE and CREATE WHAT YOU WANT TO PAINT"
5-Day Watercolor Workshop, sponsored by the Minnesota Watercolor Society
Instructor: Ellen Jean Diederich, TWSA, RRWS

Date: October 10-14, 2011 (Monday - Thursday)

Location: City of New Brighton Family Service Center, 400-10th Street NW, New Brighton, MN 55112

Hours: 9AM to 4 PM daily

Cost: \$395 MNWS \$435 (non-members) A deposit of \$125 or more will secure a spot in the workshop. The balance due must be received by August 22, 2011.

Send Registration form with payment:

Make checks payable to: MN Watercolor Society

Mail to: Susan Zinschlag
 2353 Glacier Way
 Hastings, MN 55033-3757
 Phone: (651-437-9327)
 Email: s.m.zinschlag@att.net



Workshop content:

For this workshop, all you need is some painting experience, a couple of past paintings you could make better, and an open mind. This workshop is designed to give people many techniques to plan and create a strong painting. Students will learn the power of dominance, choosing a warm or cool temperature, planning, composition, and lastly, bringing their paintings to a beautiful completion. As in Ellen's, Progressive Painting, Ellen will guide you through the creative process; blending the nuts n' bolts of creating art with the emotional and inspirational components of the creative process. To see more of Ellen's paintings, check out her website, www.givinity.com

About the artist:

Ellen Jean Diederich is an award winning artist, who lives in Fargo, North Dakota. She feels her paintings come alive through the comparisons she makes between colors, shapes, shades, and lines. Ellen says, "Instead of using all the pretty colors, I use many related dull tones to enrich the palette. My interest is in the relationships between my subjects and the space they are in and very much how the shapes touch each other. I'm not going for perfection—if I find humor I try to share that, otherwise I prefer to show the beauty of these differences."

-----Detach and Return-----

Ellen Jean Diederich Workshop Registration

Name: _____

Address _____

Phone: (____) _____ - _____ Email: _____



Workshop fee in full: MNWS Members \$395. Non-Members \$435. Amount Enclosed

Deposit needed to hold a spot in the workshop \$125.

Make check payable to MN Watercolor Society

Mail registration form and payment to:
 Susan Zinschlag, Workshop Registration
 2353 Glacier Way
 Hastings, MN 55033-3757

Balance Due

Minnesota Watercolor Society Members' Day
Saturday, June 25, 2011
RAIN or SHINE –Fish Lake Regional Park Enclosed Pavilion
14900 Bass Lake Road, Maple Grove MN 55311
9:00 AM – 6:00 PM
REGISTRATION FORM

Please fill in the information requested and return the completed form with a check made out to MNWS Members' Day for the total amount.

Mail to: MarySue Krueger
18321 Tristram Way
Eden Prairie MN 55346

Registration forms must be received by Friday, June 17, 2011.

Directions: From I - 494, take Bass Lake Road (County Road 10) west 1 mile to the park entrance. Pavilion is about ¾ mile into the park.
Maps available at www.threeriversparkdistrict.org

Questions? Contact Deb Chapin, 952.890.8684, debchapin@hotmail.com
or
MarySue Krueger at 612.716.4829, marysue@marysuekrueger.com

----- Cut here -----

Name _____ Phone _____ - _____ - _____
 Address _____
 City _____ State _____ ZIP _____
 Email _____

Registration fee **\$25.00**

Box lunches are available for **\$9.00**. Sandwiches are on Hoagy buns. All choices include fruit, side salad and dessert. Beverages will be provided. Please select from the choices below.

- | | |
|--|--------------------------------------|
| <input type="checkbox"/> Turkey | <input type="checkbox"/> Egg Salad |
| <input type="checkbox"/> Roast Beef | <input type="checkbox"/> Veggie Wrap |
| <input type="checkbox"/> Chicken Salad | |

I would like to order _____ box lunch(es) at \$9.00 each for a total of.....\$_____.

Total amount enclosed..... \$_____.

I volunteer to help with Members' Day:

- | | |
|---|---|
| <input type="checkbox"/> Check-in | <input type="checkbox"/> Artists' assistants (4 needed) |
| <input type="checkbox"/> Refreshments and lunch | <input type="checkbox"/> Cleanup |

MEMBER happenings

Send member news to:

BrushStrokes, 10910 Quebec Ave. S., Bloomington, MN 55438 or e-mail tweseman@earthlink.net. Images are welcome and used as space permits.

- ▶ **Janet Green** has a painting accepted into the Red River Watercolor Society's 18th Annual National Exhibit.
- ▶ **Catherine Hearing** has paintings accepted into the 35th Annual Transparent Watercolor Society National Exhibition, the National Watercolor Society Juried Member Exhibition and Watercolor USA, 2011.
- ▶ **Kris Fretheim** has shipped a painting off to the Watercolor U.S.A. 2011 Exhibition on display from June 11 – August 7 at the Springfield Art Museum in Springfield, MO.
- ▶ **Jennifer Stone** received Best of Show with her painting "Coneflower Study" at the 31st Annual Artists of the Plains Show at the Center For Western Studies, Augustana College, Sioux Falls, SD. Jennifer will also have a solo show at the Center For Western Studies September through November. Her painting "Second Chance" was juried into the Red River Watercolor Society's 18th Annual National Exhibit.
- ▶ **Joyce Tibbs** won 3rd place in the juried Christian Art Festival at Crossview Lutheran Church, Edina MN.
- ▶ MNWS artists **Nancy Carney, Keith Donaldson, Andy Evansen, Karen Knutson, MarySue Krueger, Judy Lieber, David Rickert, Gail Specmann, Pat Undis, and Dan Wiemer** have an art exhibit, "Mississippi Project" June 11 - August 13 at the Banfill-Loxke Center for the Arts, 6666 East River Road, Fridley, MN. There will be gallery talks, painting demonstrations and studio visits. Go to www.banfill-locke.org for more information or call 763-574-1850.

MNWS MEMBERS

We have 361 paid members!

(Check the label on your newsletter to see when your membership dues are due.)

You can now renew your membership and pay online through the Minnesota Watercolor Society website

www.minnesotawatercolors.com

See page 6 for details.

METROPOLITAN PICTURE FRAMING
Metroframe.com
 classic exhibition frames wholesale



Complete framing advice on the web.

952-941-6649
www.metroframe.com

Call for Entries

The Kentucky Watercolor Society announces its 34th Annual National Show, September 27- October 29, 2011. A PDF file may be downloaded at www.KentuckyWatercolorSociety.org. Prospectus may also be obtained by sending a SASE to KWS, POB 7125, Louisville, KY 40257-0125.

The National Watercolor Society, NWS National Gallery 915 South Pacific Ave., San Pedro, CA 90731 October 22- December 3, 2011. Deadline: July 9, 2011 Approximately \$25,000 in awards. Jury of Selection: Ted Nutall, chair; Mary Ann Beckwith, Judy Morris. Juror of Awards: Harold Gregor. Prospectus available at www.nationalwatercolorssociety.org or SASE to Nancy Schiershke, 505 Vaquero Rd., Arcadia, CA 90505.

MNWS Board minutes

May highlights:

- Sandy Koeger and Bonnie Featherstone new MNWS workshop co-chairs
- Victor Perlbachs new Fall Show chair
- Hospitality chair and Spring Show chair positions open

Northstar Meetings

Plein Air Paint Outs

June - August

Go to Northstar's website.

For more info visit Northstar's website: www.northstarwatercolorssociety.com.

Workshops:

George James - October 2011

John Salminen - October 2013

workshops and classes

Want to find more classes?

Visit the MNWS website at www.minnesotawatercolors.com and click the "Happenings" link at the top of the page. To include your listings please e-mail information to info@minnesotawatercolors.com

MNWS *calendar*

Programs are held the second
Thursday of the month at 7:00 p.m.

Jun. 25 Members' Day
Fish Lake Regional Park

Location: Christ Presbyterian
Church, 6901 Normandale Blvd.,
Edina, MN (Corner of 70th St. S.
and Hwy 100)

MEMBERSHIP APPLICATION

**Mail your application and check payable
to Minnesota Watercolor Society to:**

Carol Wingard, Membership Chair
10427 Fawns Way
Eden Prairie, MN 55347

MNWS Membership Dues:

- College Student \$15
- Single \$30
- Couple/Family: \$40
- Seniors (65+) \$25

Name _____

Address _____

City _____

State, Zip _____

Telephone _____

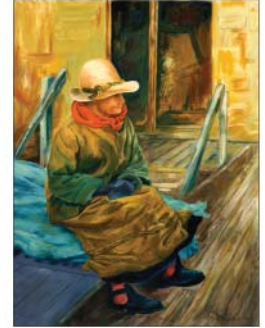
Email _____

Check here to have your name removed from
the list sent to our exhibition award donors who
mail product information to our members.

H•R **HUSOM & ROSE**
PHOTOGRAPHICS
715.792.5556

FINE ART PRINTING

Professional giclee print services using the
finest quality paper, canvases and ink.



© A. Rosasco

Studio Ramble

visit Husom & Rose • Site #13

September 25-26th • 10:00 - 5:00
W8484 162nd Ave. Hager City, WI

www.husomandrose.com

3 miles from Red Wing, MN

Wet Paint
inc.
Artists' Materials & Framing

1684 Grand Avenue Saint Paul
651.698.6431 info@wetpaintart.com
www.wetpaintart.com

Your most complete local source for
watercolors & mediums, brushes,
watercolor papers, pads & blocks

— MnWS Mission Statement
"To further development
of the watercolor artist
by providing a
supportive environment
with education and exhibition
opportunities, and to promote
public appreciation and greater
visibility of the art."

10427 Fawns Way, Eden Prairie, MN 55347-5117

